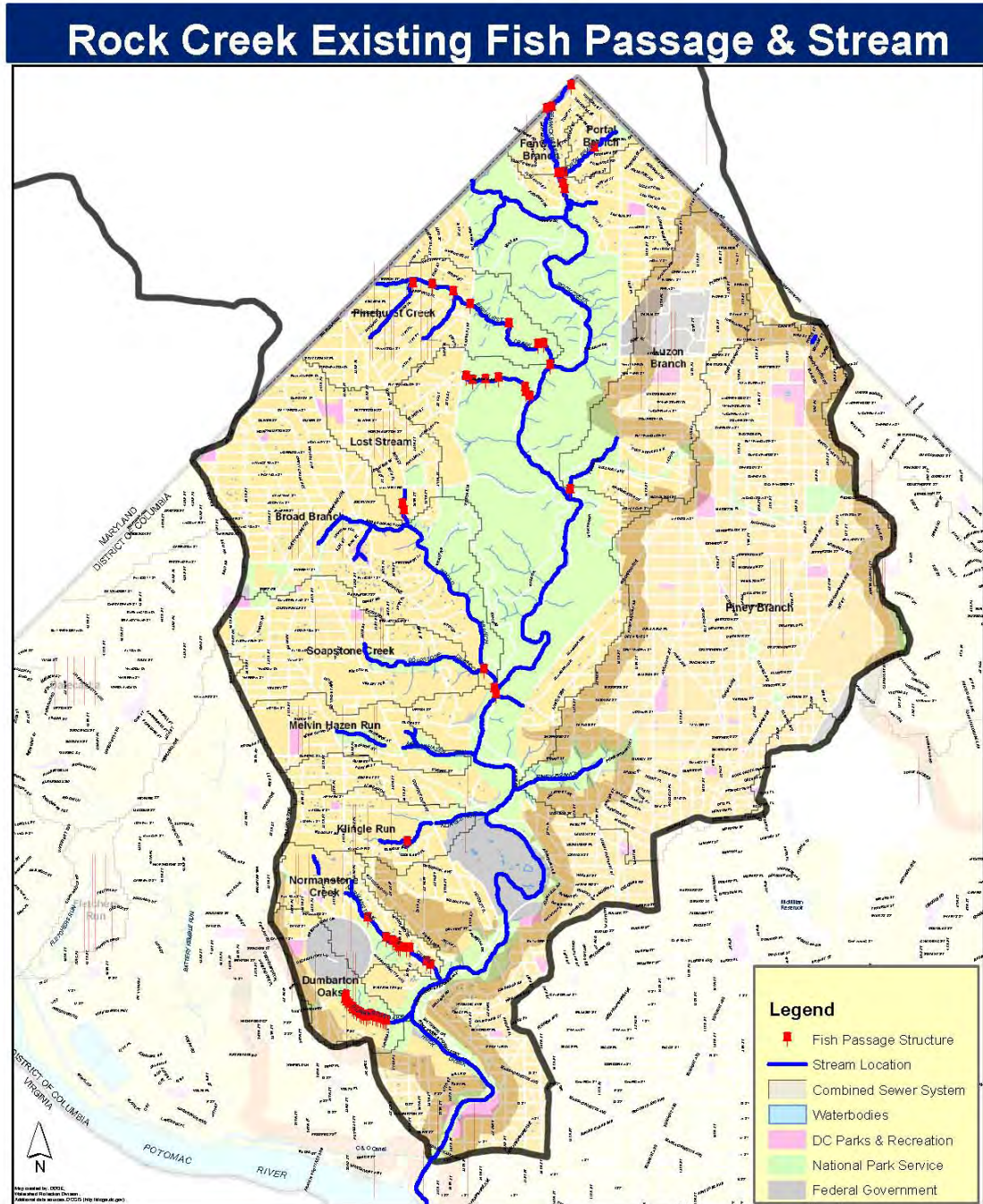


Appendix B: Stream Restoration Sites



PROJECT_NUMBER	RC_Stream_01
SITE_LOCATION	Park Between Willow Street NW and Maple Street NW
ADC_MAP_LOCATION	5408_H5
OWNERSHIP	Public
APPROXIMATE_LENGTH (Feet)	252
DESCRIPTION_OF_EXISTING_CONDITIONS	Stream valley park with no stream. Over-land drainage with piped inflow and outflow at both ends of the park. 1st order ephemeral stream.
PROJECT_DESCRIPTION	Daylight the stream and reintroduce ground water from bioretention and rain gardens on private property, repair inflow and outflow pipes.
ESTIMATED_COST	\$188,978.00
PROJECT_RANKING_EDUCATION	Medium
PROJECT_RANKING_ENVIRONMENT	High
PROJECT_RANKING_INSTALLATION	High



PROJECT_NUMBER	RC_Stream_02
SITE_LOCATION	Lowell School - 1640 Kalmia Street NW
ADC_MAP_LOCATION	5408_D3
OWNERSHIP	Private
APPROXIMATE_LENGTH (Feet)	1009
DESCRIPTION_OF_EXISTING_CONDITIONS	Natural spring on school grounds. The school daylighted an underground pipe to create a low flow stream. The school planted some trees along the spring, but there are still open areas and exposed banks. Piped at 17th Street NW to Rock Creek.
PROJECT_DESCRIPTION	Stream bank stabilization. Riparian forest buffer planting. Planting of herbaceous emergents along stream banks. Daylighting of lower portion of stream.
ESTIMATED_COST	\$756,690.00
PROJECT_RANKING_EDUCATION	High
PROJECT_RANKING_ENVIRONMENT	Medium
PROJECT_RANKING_INSTALLATION	Medium

PROJECT_NUMBER	RC_Stream_03
SITE_LOCATION	Portal Branch - Between North Portal NW and South Portal NW
ADC_MAP_LOCATION	5408_D2
OWNERSHIP	Public
APPROXIMATE_LENGTH (Feet)	2351
DESCRIPTION_OF_EXISTING_CONDITIONS	Deeply incised stream from outfall where comes above ground to mouth at Rock Creek. Several collapsed outfalls sending stormwater into stream. Exposed sewer line adjacent to stream.
PROJECT_DESCRIPTION	Bioretention & regenerative stormwater conveyances for outfalls. Invasive removal and riparian buffer planting. Likely need for hardening banks, flow diversion to protect sewer infrastructure. Comprehensive work for length of stream.
ESTIMATED_COST	\$2,351,120.00
PROJECT_RANKING_EDUCATION	Low
PROJECT_RANKING_ENVIRONMENT	High
PROJECT_RANKING_INSTALLATION	High



PROJECT_NUMBER

RC_Stream_04

SITE_LOCATION

Dumbarton Run - Whitehaven Street NW to Rock Creek main stem

ADC_MAP_LOCATION

5527_K4&5528_A4

OWNERSHIP

Public

APPROXIMATE_LENGTH (Feet)

2717

DESCRIPTION_OF_EXISTING_CONDITIONS

Small first order stream with some incised banks at up stream end and greater erosion downstream of Lover's Lane NW. Many blockages to fish passage and hardened banks.

PROJECT_DESCRIPTION

Invasive removal and riparian buffer planting. Remove fish blockages and hardened banks. Close/repair pathways to reduce erosion and control stormwater. Comprehensive work for length of stream. Flow diversion to protect sewer infrastructure near mouth.

ESTIMATED_COST

\$2,716,710.00

PROJECT_RANKING_EDUCATION

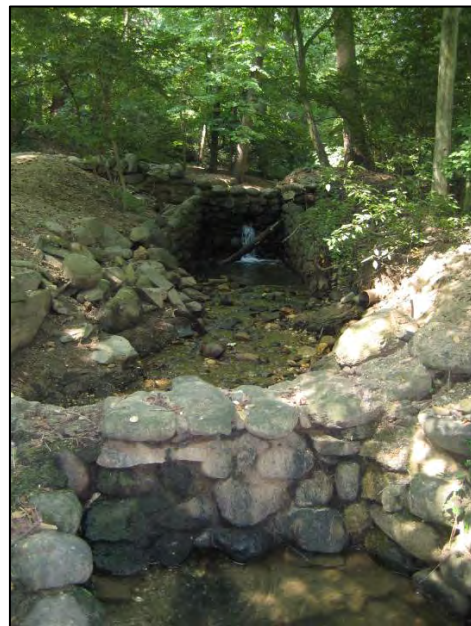
High

PROJECT_RANKING_ENVIRONMENT

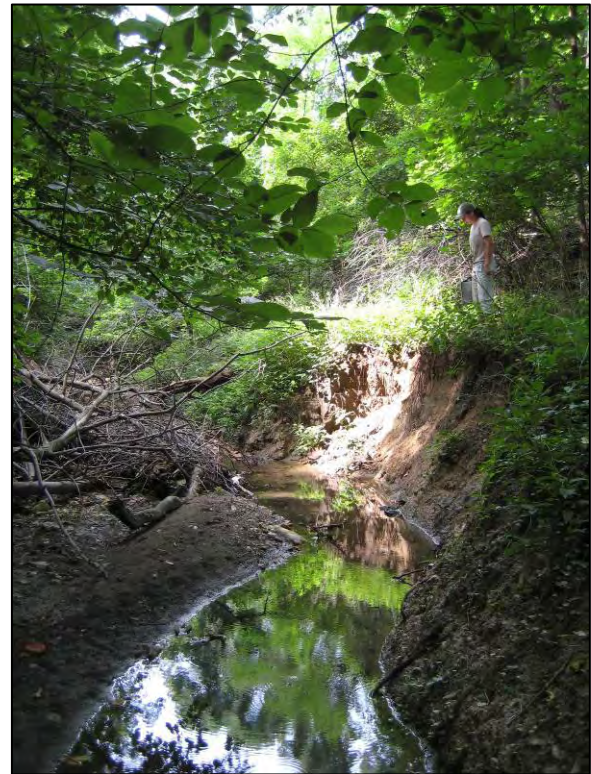
High

PROJECT_RANKING_INSTALLATION

Low



PROJECT_NUMBER	RC_Stream_05
SITE_LOCATION	Linnaean Playground Park - Linnaean Road NW and Harrison Street NW
ADC_MAP_LOCATION	5407_K7
OWNERSHIP	Public
APPROXIMATE_LENGTH (Feet)	1178
DESCRIPTION_OF_EXISTING_CONDITIONS	First order stream with moderate erosion and many invasive plants. Stream goes into a pipe at Linnaean Road NW. Some trash and fallen trees.
PROJECT_DESCRIPTION	Stream bank stabilization for length of stream. Install regenerative stormwater conveyances and/or bioretention to slow/infiltrate stormwater entering the stream valley.
ESTIMATED_COST	\$883,500.00
PROJECT_RANKING_EDUCATION	Low
PROJECT_RANKING_ENVIRONMENT	Medium
PROJECT_RANKING_INSTALLATION	High



PROJECT_NUMBER	RC_Stream_06
SITE_LOCATION	Tregaron Park - Klingle Road NW and Cortland Place NW
ADC_MAP_LOCATION	5528_A2
OWNERSHIP	Private
APPROXIMATE_LENGTH (Feet)	957
DESCRIPTION_OF_EXISTING_CONDITIONS	Wooded, manicured garden open to public with a small stream flowing through the park. Stream piped in some locations and bare soil exposed in areas. Stream flows under lily pond. Stream leaves park at Klingle Road where it is directed into a culvert.
PROJECT_DESCRIPTION	Some stream bank stabilization and planting of herbaceous emergents. Potential wetland where stream flows into culvert. Remove culvert at Klingle Road, daylight stream and put a bridge over restored stream.
ESTIMATED_COST	\$718,065.00
PROJECT_RANKING_EDUCATION	High
PROJECT_RANKING_ENVIRONMENT	High
PROJECT_RANKING_INSTALLATION	Medium



PROJECT_NUMBER	RC_Stream_07
SITE_LOCATION	Upper Klingle Run - Klingle Road NW and Cortland Place NW to Connecticut Avenue NW
ADC_MAP_LOCATION	5528_A2&A1
OWNERSHIP	Public
APPROXIMATE_LENGTH (Feet)	1192
DESCRIPTION_OF_EXISTING_CONDITIONS	Deeply incised stream from outfall where comes above ground to mouth at Rock Creek. Roadway adjacent to stream collapsing and closed. Exposed sewer line at Connecticut Ave.
PROJECT_DESCRIPTION	Remove roadway and replace with bioretention and stream restoration. Likely need for hardening banks, flow diversion to protect sewer infrastructure. Comprehensive work for length of stream.
ESTIMATED_COST	\$1,192,390.00
PROJECT_RANKING_EDUCATION	High
PROJECT_RANKING_ENVIRONMENT	High
PROJECT_RANKING_INSTALLATION	High



PROJECT_NUMBER

RC_Stream_08

SITE_LOCATION

Lower Klinge Run - Connecticut Avenue Bridge NW to Rock Creek

ADC_MAP_LOCATION

5528_A1&B1

OWNERSHIP

Public

APPROXIMATE_LENGTH (Feet)

1725

DESCRIPTION_OF_EXISTING_CONDITIONS

Deeply incised stream from outfall where comes above ground to mouth at Rock Creek. Roadway adjacent to stream collapsing and closed. Channelized stream near mouth. Several roadways overly wide or unneeded at mouth of stream.

PROJECT_DESCRIPTION

Remove roadway and replace with bioretention and stream restoration. Remove roadways at lower end of stream and make large bioretention cell. Comprehensive work for length of stream.

ESTIMATED_COST

\$1,725,360.00

PROJECT_RANKING_EDUCATION

High

PROJECT_RANKING_ENVIRONMENT

High

PROJECT_RANKING_INSTALLATION

High



PROJECT_NUMBER	RC_Stream_09
SITE_LOCATION	Upper Normanstone Run - 34th Street NW and Garfield Street NW to 30th Street NW and Normanstone Dr
ADC_MAP_LOCATION	5527_K2&K3
OWNERSHIP	Public
APPROXIMATE_LENGTH (Feet)	2913
DESCRIPTION_OF_EXISTING_CONDITIONS	First order stream behind single family homes. Aqua discoloration at first outfall. Orange discoloration from second outfall. Stream in fair condition with points of erosion until Normanstone Drive. At this point - hardened banks, downcutting.
PROJECT_DESCRIPTION	Investigate discoloration. Correct point erosion with soft bank stabilization & flow deflection. Comprehensive stream restoration downstream of point where Normanstone Run flows next to Normanstone Drive.
ESTIMATED_COST	\$2,913,000.00
PROJECT_RANKING_EDUCATION	Medium
PROJECT_RANKING_ENVIRONMENT	High
PROJECT_RANKING_INSTALLATION	High



PROJECT_NUMBER	RC_Stream_10
SITE_LOCATION	Lower Normanstone Run - 30th Street NW and Normanstone Dr to Rock Creek
ADC_MAP_LOCATION	5528_A3
OWNERSHIP	Public
APPROXIMATE_LENGTH (Feet)	1921
DESCRIPTION_OF_EXISTING_CONDITIONS	First order stream adjacent to Normanstone Dr. Bridge culverts, hardened banks, downcutting have heavily impacted stream. Stream piped under Rock Creek Dr. Emerges as free flowing stream w/heavy erosion to Rock Creek. Sewage smell. No flow at mouth.
PROJECT_DESCRIPTION	Comprehensive stream restoration downstream of point where Normanstone Run flows next to Normanstone Dr. Invasive removal and buffer planting. Need for hardening banks, flow diversion to protect sewer infrastructure. Correct sewer infrastructure.
ESTIMATED_COST	\$1,920,940.00
PROJECT_RANKING_EDUCATION	Medium
PROJECT_RANKING_ENVIRONMENT	High
PROJECT_RANKING_INSTALLATION	High

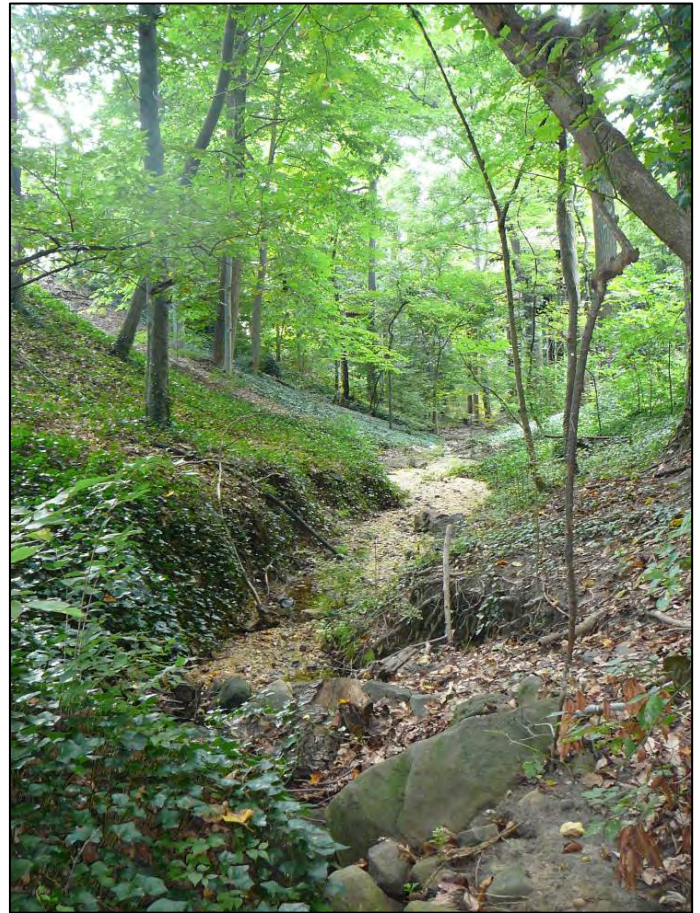


PROJECT_NUMBER RC_Stream_11
SITE_LOCATION St. Albans School - 3000 Wisconsin Ave NW

ADC_MAP_LOCATION 5527_J2&K2
OWNERSHIP Private
APPROXIMATE_LENGTH (Feet) 580
DESCRIPTION_OF_EXISTING_CONDITIONS Large wooded area with existing stream valley. Likely that stream has been piped.

PROJECT_DESCRIPTION Daylight first order stream in stream valley. Augment flow of stream with additional base flow from water infiltrated by coastal plain outfalls and bioretention for runoff from parking lot and campus roadways.

ESTIMATED_COST \$434,812.00
PROJECT_RANKING_EDUCATION High
PROJECT_RANKING_ENVIRONMENT Medium
PROJECT_RANKING_INSTALLATION High



PROJECT_NUMBER

RC_Stream_12

SITE_LOCATION

Upper Melvin Hazen Run - Reno Road NW to Connecticut Avenue NW

ADC_MAP_LOCATION

5407_K10

OWNERSHIP

Public

APPROXIMATE_LENGTH (Feet)

1686

DESCRIPTION_OF_EXISTING_CONDITIONS

Wooded stream valley west of Connecticut Avenue NW. Stream is severely down cut with active erosion. Steep, unstable stream banks. Stream is piped to flow under Connecticut Avenue. Pipe is clogged and has created a wetland area.

PROJECT_DESCRIPTION

Bioretention & regenerative stormwater conveyances for outfalls. Invasive removal and riparian buffer planting. Likely need for hardening banks. Comprehensive work for length of stream. Engineer lower area as a palustrine wetland and plant it.

ESTIMATED_COST

\$1,685,760.00

PROJECT_RANKING_EDUCATION

Medium

PROJECT_RANKING_ENVIRONMENT

High

PROJECT_RANKING_INSTALLATION

High



PROJECT_NUMBER

RC_Stream_13

SITE_LOCATION

Lower Melvin Hazen Run - Connecticut Avenue NW to Rock Creek

ADC_MAP_LOCATION

5408_A10&B10

OWNERSHIP

Public

APPROXIMATE_LENGTH (Feet)

3165

DESCRIPTION_OF_EXISTING_CONDITIONS

Stream emerges from a pipe east of Connecticut Avenue. Stream banks stable until close to Rock Creek where downcutting is occurring. Paths along creek unstable and eroding into creek.

PROJECT_DESCRIPTION

Flow deflection and bank stabilization for lower reaches of Melvin Hazen Run. Reroute pathways to discourage dogs and people from walking in stream area.

ESTIMATED_COST

\$3,165,380.00

PROJECT_RANKING_EDUCATION

Medium

PROJECT_RANKING_ENVIRONMENT

Medium

PROJECT_RANKING_INSTALLATION

High



PROJECT_NUMBER	RC_Stream_14
SITE_LOCATION	Upper Broad Branch - Outfall at Broad Branch Road NW to Grant Road NW
ADC_MAP_LOCATION	5408_A7&A8
OWNERSHIP	Public
APPROXIMATE_LENGTH (Feet)	2102
DESCRIPTION_OF_EXISTING_CONDITIONS	Stream emerges from pipe at Ivory Coast ambassador's residence. Stream down to bedrock for length. Soft banks with erosion on upper end. Hardened banks on roadside for lower reaches. Collapsing in some locations.
PROJECT_DESCRIPTION	Bioretention & regenerative stormwater conveyances for outfalls. Invasive removal and riparian buffer planting. Likely need for hardening banks, flow diversion to protect sewer infrastructure. Comprehensive work for length of stream.
ESTIMATED_COST	\$1,576,418.00
PROJECT_RANKING_EDUCATION	Medium
PROJECT_RANKING_ENVIRONMENT	High
PROJECT_RANKING_INSTALLATION	Medium



PROJECT_NUMBER

RC_Stream_15

SITE_LOCATION

Lower Broad Branch - Grant Road NW to Rock Creek

ADC_MAP_LOCATION

5408_B8&B9

OWNERSHIP

Public

APPROXIMATE_LENGTH (Feet)

4368

DESCRIPTION_OF_EXISTING_CONDITIONS

Stream down to bedrock for length. Soft banks with erosion on wooded side opposite roadway. Hardened banks on roadside for lower reaches. Collapsing in some locations.

PROJECT_DESCRIPTION

Bioretention & regenerative stormwater conveyances for outfalls. Invasive removal and riparian buffer planting. Likely need for hardening banks, flow diversion to protect sewer infrastructure. Comprehensive work for length of stream.

ESTIMATED_COST

\$3,276,098.00

PROJECT_RANKING_EDUCATION

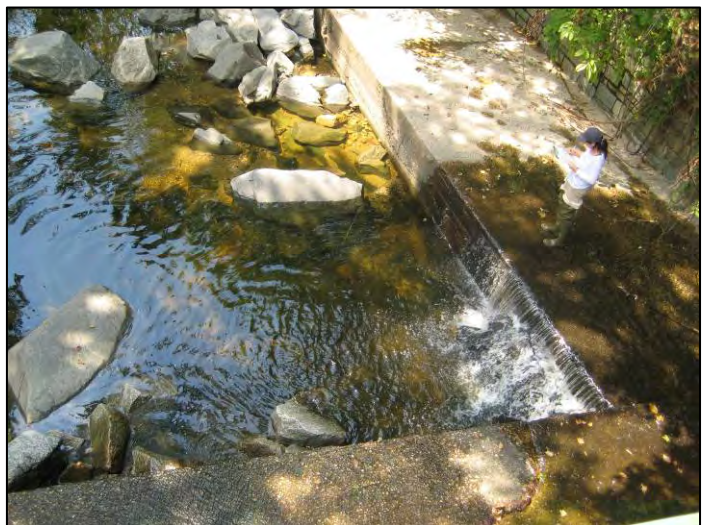
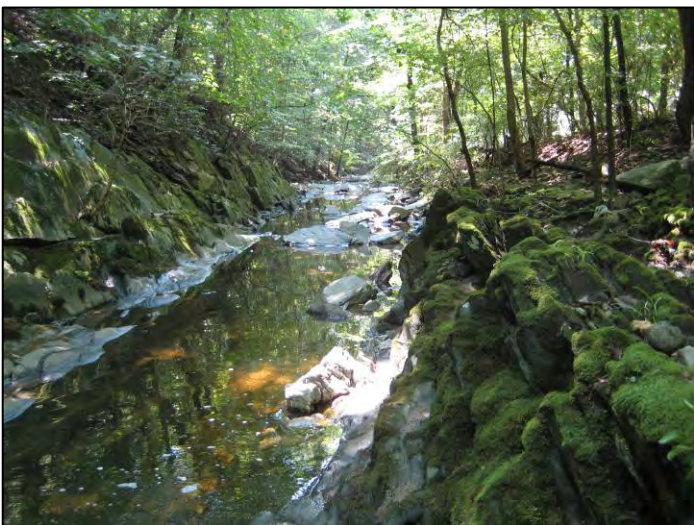
Medium

PROJECT_RANKING_ENVIRONMENT

High

PROJECT_RANKING_INSTALLATION

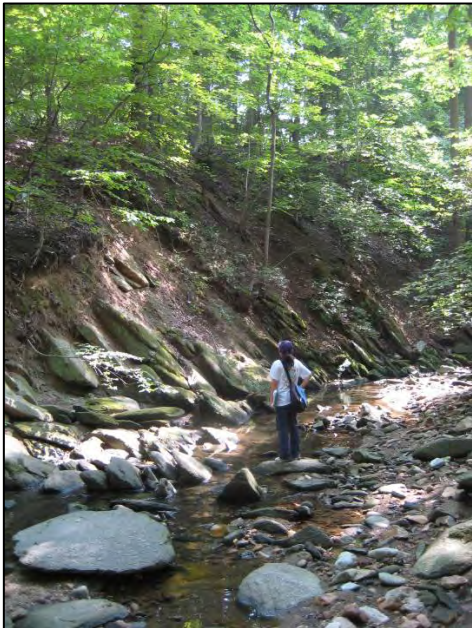
Medium



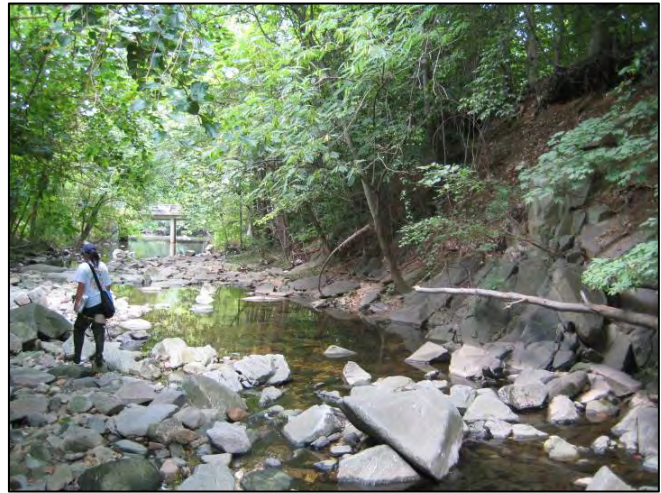
PROJECT_NUMBER	RC_Stream_16
SITE_LOCATION	Tributary to Broad Branch - Military Road NW and 31st Street NW to Broad Branch Road NW
ADC_MAP_LOCATION	5408_A7
OWNERSHIP	Public
APPROXIMATE_LENGTH (Feet)	1208
DESCRIPTION_OF_EXISTING_CONDITIONS	First order stream emerging from outfall of Military Road NW. Stream downcutting - some exposed sewer lines creating fish passage blockages.
PROJECT_DESCRIPTION	Soft bank stabilization, grade control and flow diversion structures to stabilize stream banks. Regenerative stormwater conveyance for Ingleside retirement home.
ESTIMATED_COST	\$1,208,370.00
PROJECT_RANKING_EDUCATION	Medium
PROJECT_RANKING_ENVIRONMENT	High
PROJECT_RANKING_INSTALLATION	High



PROJECT_NUMBER	RC_Stream_17
SITE_LOCATION	Soapstone Creek - Connecticut Avenue NW and Albemarle Street NW to Broad Branch
ADC_MAP_LOCATION	5407_K9&5408_A9&B9
OWNERSHIP	Public
APPROXIMATE_LENGTH (Feet)	4532
DESCRIPTION_OF_EXISTING_CONDITIONS	Wooded stream valley east of Connecticut Avenue NW near Van Ness. Most densely developed area with a lot of stormwater. Stream is severely down cut with active erosion. Steep, unstable stream banks. Sewage smell at outfall.
PROJECT_DESCRIPTION	Bioretention & regenerative stormwater conveyances for outfalls. Likely need for some hardening of banks & flow deflection devices to protect sewer infrastructure. Comprehensive work for length of stream. Correct sewage leaks.
ESTIMATED_COST	\$4,532,300.00
PROJECT_RANKING_EDUCATION	High
PROJECT_RANKING_ENVIRONMENT	High
PROJECT_RANKING_INSTALLATION	High



PROJECT_NUMBER	RC_Stream_18
SITE_LOCATION	Piney Branch - North of Piney Branch Parkway NW from 16th Street NW to Rock Creek
ADC_MAP_LOCATION	5528_C1&D1
OWNERSHIP	Public
APPROXIMATE_LENGTH (Feet)	2944
DESCRIPTION_OF_EXISTING_CONDITIONS	Stream emerges from pipe near intersection with 17th Street & Parkway. Stream down to bedrock for length. Predominantly hardened banks on roadside for length of stream. Collapsing in some locations. Outfall poured concrete pad for 100 yards.
PROJECT_DESCRIPTION	Bioretention & regenerative stormwater conveyances for outfalls into stream. Invasive removal and riparian buffer planting. Willow stakes in hardened banks, harden banks & flow diversion for soft banks. Comprehensive work for length of stream.
ESTIMATED_COST	\$2,943,810.00
PROJECT_RANKING_EDUCATION	High
PROJECT_RANKING_ENVIRONMENT	High
PROJECT_RANKING_INSTALLATION	High



PROJECT_NUMBER
SITE_LOCATION

RC_Stream_19
Rock Creek main stem - Boundary Bridge to Wise Road NW

ADC_MAP_LOCATION
OWNERSHIP

5408_B3C3&D3
Public

APPROXIMATE_LENGTH (Feet)

4750

DESCRIPTION_OF_EXISTING_CONDITIONS

Forested stream valley with 2-lane road adjacent to stream for length of stream segment. Stream has mix of hardened bank structures and soft banks. Soft banks often show downcutting. Storm and sewer infrastructure present in stream valley.

PROJECT_DESCRIPTION

Comprehensive stream restoration with a mix of hard and soft structures and flow diversion devices to protect infrastructure. Planting of stream banks with deep rooted vegetation.

ESTIMATED_COST

\$3,562,628.00

PROJECT_RANKING_EDUCATION

High

PROJECT_RANKING_ENVIRONMENT

High

PROJECT_RANKING_INSTALLATION

High



PROJECT_NUMBER	RC_Stream_20
SITE_LOCATION	Unnamed tributary to Rock Creek - Oregon Avenue NW and Daniel Lane NW to Rock Creek
ADC_MAP_LOCATION	5408_B3&C3
OWNERSHIP	Public
APPROXIMATE_LENGTH (Feet)	1837
DESCRIPTION_OF_EXISTING_CONDITIONS	Stormwater from Oregon Avenue and neighboring roadways drains into stream valley near Daniel Lane NW. Unnamed stream is highly incised and actively undercutting.
PROJECT_DESCRIPTION	Install regenerative stormwater conveyance at outfall from Oregon Avenue east of Daniel Lane NW. Comprehensive stream restoration for rest of stream valley.
ESTIMATED_COST	\$1,377,518.00
PROJECT_RANKING_EDUCATION	Medium
PROJECT_RANKING_ENVIRONMENT	High
PROJECT_RANKING_INSTALLATION	High



PROJECT_NUMBER	RC_Stream_21
SITE_LOCATION	Bingham Run - Bingham Road NW from Oregon Avenue NW to Rock Creek
ADC_MAP_LOCATION	5408B5&C5
OWNERSHIP	Public
APPROXIMATE_LENGTH (Feet)	2550
DESCRIPTION_OF_EXISTING_CONDITIONS	Stormwater from Nebraska Avenue, Oregon Avenue and neighboring area drains into Bingham Run at outfall at Bingham Drive NW. Bingham Run is highly incised and actively undercutting with several blockages to fish passage.
PROJECT_DESCRIPTION	Comprehensive stream restoration for stream involving a mixture of soft and hard structures to stabilize stream banks and protect infrastructure. Remove barriers to fish passage.
ESTIMATED_COST	\$1,912,178.00
PROJECT_RANKING_EDUCATION	High
PROJECT_RANKING_ENVIRONMENT	High
PROJECT_RANKING_INSTALLATION	High



PROJECT_NUMBER	RC_Stream_22
SITE_LOCATION	Upper Pinehurst Branch - Western Avenue NW and Beech Street NW to Oregon Avenue NW
ADC_MAP_LOCATION	5408A4&B4
OWNERSHIP	Public
APPROXIMATE_LENGTH (Feet)	7423
DESCRIPTION_OF_EXISTING_CONDITIONS	Deeply incised stream from outfall at Western Avenue NW where stream comes above ground to Oregon Avenue. Narrow stream valley with adjacent roadways limits restoration potential. Some exposed sewer infrastructure and blockages to fish passage.
PROJECT_DESCRIPTION	Bioretention & regenerative stormwater conveyances for outfalls. Invasive removal and riparian buffer planting. Likely need for hardening banks, flow diversion to protect sewer & road infrastructure. Comprehensive work for length of stream.
ESTIMATED_COST	\$5,567,085.00
PROJECT_RANKING_EDUCATION	Medium
PROJECT_RANKING_ENVIRONMENT	High
PROJECT_RANKING_INSTALLATION	High



PROJECT_NUMBER

RC_Stream_23

SITE_LOCATION

Lower Pinehurst Branch - Oregon Avenue NW to Rock Creek

ADC_MAP_LOCATION

5408B4&C5

OWNERSHIP

Public

APPROXIMATE_LENGTH (Feet)

4075

DESCRIPTION_OF_EXISTING_CONDITIONS

Deeply incised stream from Oregon Avenue Bridge to Rock Creek. Undeveloped stream valley gives restoration potential however a lot of sewer infrastructure present. Some exposed sewer lines and blockages to fish passage.

PROJECT_DESCRIPTION

Bioretention & regenerative stormwater conveyances for outfalls. Invasive removal and riparian buffer planting. Likely need for some hardening of banks, flow diversion to protect sewer infrastructure. Comprehensive work for length of stream.

ESTIMATED_COST

\$4,074,870.00

PROJECT_RANKING_EDUCATION

High

PROJECT_RANKING_ENVIRONMENT

High

PROJECT_RANKING_INSTALLATION

High



PROJECT_NUMBER

RC_Stream_24

SITE_LOCATION

Luzon Branch - 16th Street NW and Joyce Road NW to Rock Creek

ADC_MAP_LOCATION

5408_D6&D7

OWNERSHIP

Public

APPROXIMATE_LENGTH (Feet)

2646

DESCRIPTION_OF_EXISTING_CONDITIONS

Stream at bedrock from where comes above ground at Joyce Road NW and 16th Street NW to mouth at Rock Creek. Mix of soft banks with erosion and hardened banks protecting roadway infrastructure. Need for buffer. Several outfalls into stream.

PROJECT_DESCRIPTION

Bioretention & regenerative stormwater conveyances for outfalls. Invasive removal and riparian buffer planting. Reengineer hardened banks, flow diversion to protect roadway & sewer infrastructure. Comprehensive work for length of stream.

ESTIMATED_COST

\$2,645,500.00

PROJECT_RANKING_EDUCATION

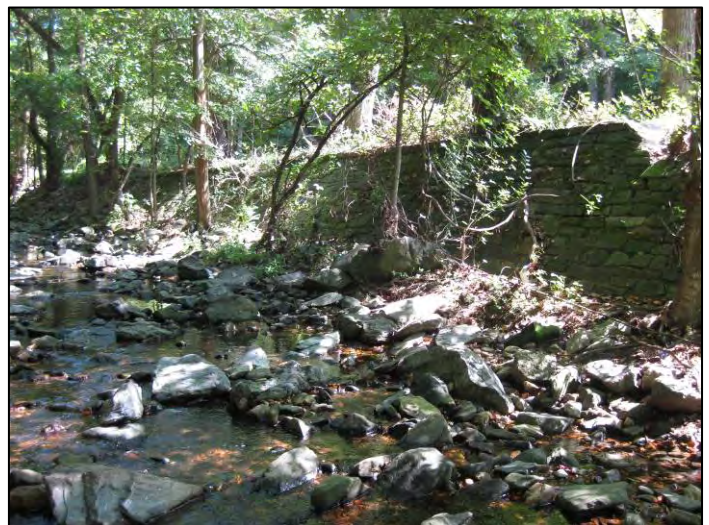
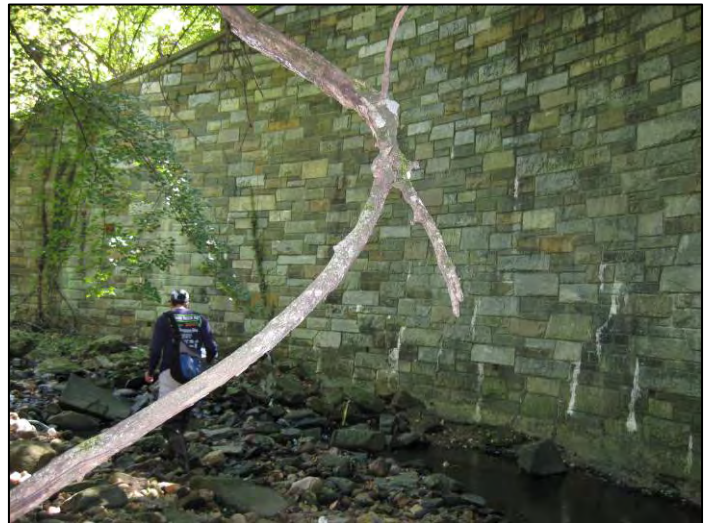
Low

PROJECT_RANKING_ENVIRONMENT

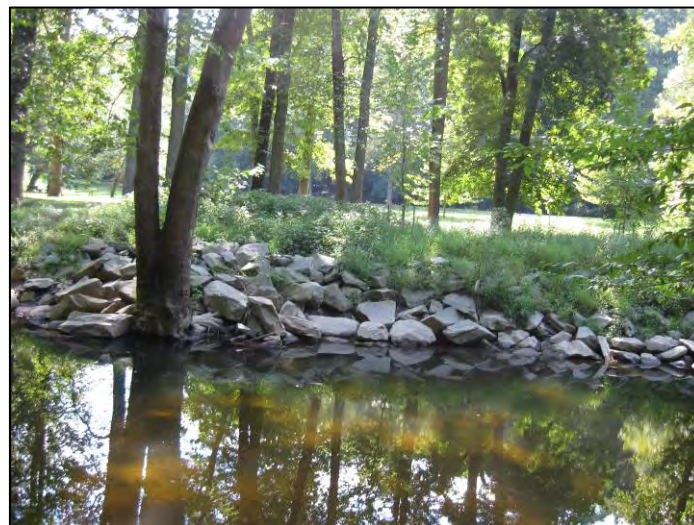
High

PROJECT_RANKING_INSTALLATION

High



PROJECT_NUMBER	RC_Stream_25
SITE_LOCATION	Rock Creek main stem - Wise Road NW to Old Military Road NW
ADC_MAP_LOCATION	5408_C4toC7
OWNERSHIP	Public
APPROXIMATE_LENGTH (Feet)	11362
DESCRIPTION_OF_EXISTING_CONDITIONS	Forested stream valley with 2-lane road adjacent to stream for length of stream segment. Stream has mix of hardened bank structures and soft banks. Soft banks often show downcutting. Storm and sewer infrastructure present in stream valley.
PROJECT_DESCRIPTION	Comprehensive stream restoration with a mix of hard and soft structures and flow diversion devices to protect infrastructure. Planting of stream banks with deep rooted vegetation.
ESTIMATED_COST	\$8,521,402.00
PROJECT_RANKING_EDUCATION	High
PROJECT_RANKING_ENVIRONMENT	High
PROJECT_RANKING_INSTALLATION	High



PROJECT_NUMBER	RC_Stream_26
SITE_LOCATION	Rock Creek main stem - Old Military Road NW to Broad Branch Road
ADC_MAP_LOCATION	5408_D7toC9
OWNERSHIP	Public
APPROXIMATE_LENGTH (Feet)	8947
DESCRIPTION_OF_EXISTING_CONDITIONS	Forested stream valley with 2-lane road adjacent to stream for length of stream segment. Stream has mix of hardened bank structures and soft banks. Soft banks often show downcutting. Storm and sewer infrastructure present in stream valley.
PROJECT_DESCRIPTION	Comprehensive stream restoration with a mix of hard and soft structures and flow diversion devices to protect infrastructure. Planting of stream banks with deep rooted vegetation.
ESTIMATED_COST	\$6,710,168.00
PROJECT_RANKING_EDUCATION	High
PROJECT_RANKING_ENVIRONMENT	High
PROJECT_RANKING_INSTALLATION	High

PROJECT_NUMBER	RC_Stream_27
SITE_LOCATION	Upper Fenwick Branch - MD border at East-West Hwy to Portal Branch
ADC_MAP_LOCATION	5408_D1&C2
OWNERSHIP	Public
APPROXIMATE_LENGTH (Feet)	3880
DESCRIPTION_OF_EXISTING_CONDITIONS	Deeply incised stream from outfall at East-West Hwy where stream comes above ground to Portal Branch. Moderate protected stream valley but large amounts of stormwater from MD limit restoration. Exposed sewer infrastructure and blockages to fish passage.
PROJECT_DESCRIPTION	Bioretention & regenerative stormwater conveyances for outfalls. Invasive removal and riparian buffer planting. Likely need for hardening banks, flow diversion to protect sewer & road infrastructure. Comprehensive work for length of stream.
ESTIMATED_COST	\$3,880,430.00
PROJECT_RANKING_EDUCATION	Medium
PROJECT_RANKING_ENVIRONMENT	High
PROJECT_RANKING_INSTALLATION	High



PROJECT_NUMBER

RC_Stream_28

SITE_LOCATION

Fenwick Branch at Kalmia Road NW

ADC_MAP_LOCATION

5408_D3

OWNERSHIP

Public

APPROXIMATE_LENGTH (Feet)

507

DESCRIPTION_OF_EXISTING_CONDITIONS

Sediment from upstream Fenwick Branch settling north of Kalmia Street Bridge. Culvert under bridge undersized and clogged. Sediment in stream on top of clay base layer.

PROJECT_DESCRIPTION

Redesign culvert under bridge to properly size it for flow. Potentially create wetland area upstream of bridge if won't create flooding problem. If so, remove sediment and use in upstream regenerative stormwater conveyances.

ESTIMATED_COST

\$379,935.00

PROJECT_RANKING_EDUCATION

High

PROJECT_RANKING_ENVIRONMENT

High

PROJECT_RANKING_INSTALLATION

High



PROJECT_NUMBER

RC_Stream_29

SITE_LOCATION

Lower Fenwick Branch - Portal Branch to Rock Creek main stem

ADC_MAP_LOCATION

5408_D3

OWNERSHIP

Public

APPROXIMATE_LENGTH (Feet)

1137

DESCRIPTION_OF_EXISTING_CONDITIONS

Deeply incised stream with no current stabilization measures in place. Stream valley is wide but large amounts of stormwater from MD may limit restoration. Kalmia Bridge culvert blocks fish passage.

PROJECT_DESCRIPTION

Bioretention & regenerative stormwater conveyances for outfalls. Invasive removal and riparian buffer planting. Likely need for hardening banks, flow diversion to protect sewer & road infrastructure. Comprehensive work for length of stream.

ESTIMATED_COST

\$852,915.00

PROJECT_RANKING_EDUCATION

High

PROJECT_RANKING_ENVIRONMENT

High

PROJECT_RANKING_INSTALLATION

High



PROJECT_NUMBER	RC_Stream_30
SITE_LOCATION	Blagden Run - Mathewson Drive NW and Blagden Avenue NW to Rock Creek
ADC_MAP_LOCATION	5408_C10
OWNERSHIP	Public
APPROXIMATE_LENGTH (Feet)	974
DESCRIPTION_OF_EXISTING_CONDITIONS	Stream emerges from outfall south of Mathewson Drive and follows Blagden Avenue to Rock Creek. Bank closest to Blagden Ave is hardened, other bank soft. Stream incised in locations. Barrier to fish passage at mouth of Blagden Run.
PROJECT_DESCRIPTION	Mixture of hard and soft stabilization practices. Remove barrier to fish passage at mouth of stream.
ESTIMATED_COST	\$730,455.00
PROJECT_RANKING_EDUCATION	High
PROJECT_RANKING_ENVIRONMENT	Medium
PROJECT_RANKING_INSTALLATION	High



PROJECT_NUMBER

RC_Stream_31

SITE_LOCATION

Rock Creek main stem - Broad Branch Road to Klinge Run

ADC_MAP_LOCATION

5408_C9&B10

OWNERSHIP

Public

APPROXIMATE_LENGTH (Feet)

5624

DESCRIPTION_OF_EXISTING_CONDITIONS

Forested stream valley with 2-lane road adjacent to stream for length of stream segment. Stream has mix of hardened bank structures and soft banks. Soft banks sometimes show downcutting. Storm and sewer infrastructure present in stream valley.

PROJECT_DESCRIPTION

Predominantly installation of soft structures and planting of stream banks with deep rooted vegetation. Some bank hardening and flow diversion devices to protect infrastructure.

ESTIMATED_COST

\$4,217,678.00

PROJECT_RANKING_EDUCATION

High

PROJECT_RANKING_ENVIRONMENT

High

PROJECT_RANKING_INSTALLATION

High



PROJECT_NUMBER

RC_Stream_32

SITE_LOCATION

Rock Creek main stem - Klingle Run to Dumbarton

ADC_MAP_LOCATION

5528_C1toA4

OWNERSHIP

Public

APPROXIMATE_LENGTH (Feet)

11235

DESCRIPTION_OF_EXISTING_CONDITIONS

Forested stream valley with 2-lane road that becomes 4 lane parkway adjacent to stream for length of stream segment. Stream predominantly hardened bank structures on road side. Storm and sewer infrastructure present in stream valley.

PROJECT_DESCRIPTION

Predominantly installation of soft structures and planting of stream banks with deep rooted vegetation opposite road side. Restoration of bank hardening and flow diversion devices to protect infrastructure. Plant willow stakes in hardened structures.

ESTIMATED_COST

\$8,425,920.00

PROJECT_RANKING_EDUCATION

High

PROJECT_RANKING_ENVIRONMENT

High

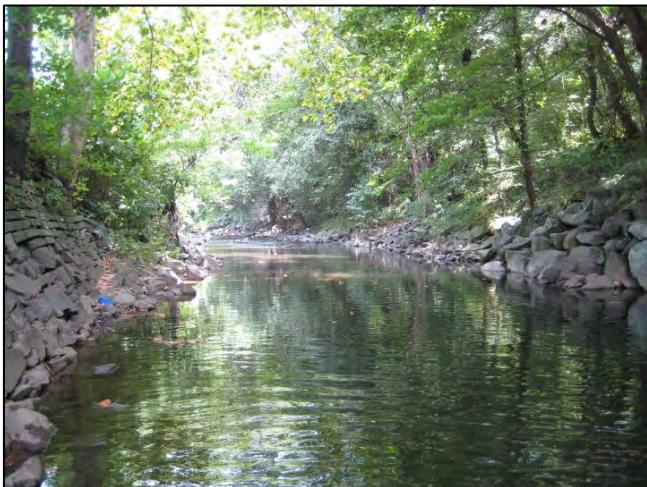
PROJECT_RANKING_INSTALLATION

High



PROJECT_NUMBER	RC_Stream_33
SITE_LOCATION	NPS land adjacent to Broad Branch Road - Broad Branch Road NW from 36th Street NW to 27th Street NW
ADC_MAP_LOCATION	5408_A7
OWNERSHIP	Public
APPROXIMATE_LENGTH (Feet)	3609
DESCRIPTION_OF_EXISTING_CONDITIONS	Stream valley park with a small first order stream that goes into a pipe at 36th Street. Stream valley intact with no stream. Stream valley mix of DDOT/NPS lands that are primarily forested.
PROJECT_DESCRIPTION	Daylight the stream and reintroduce ground water from bioretention from roadways to increase baseflow.
ESTIMATED_COST	\$2,706,652.00
PROJECT_RANKING_EDUCATION	High
PROJECT_RANKING_ENVIRONMENT	High
PROJECT_RANKING_INSTALLATION	High

PROJECT_NUMBER	RC_Stream_34
SITE_LOCATION	Rock Creek main stem - Dumbarton Run to Pennsylvania Avenue NW
ADC_MAP_LOCATION	5528_A4&B5
OWNERSHIP	Public
APPROXIMATE_LENGTH (Feet)	6337
DESCRIPTION_OF_EXISTING_CONDITIONS	Forested stream valley with 4 lane parkway adjacent to stream for length of stream segment. Stream predominantly hardened bank structures on road side. Storm and sewer infrastructure present in stream valley.
PROJECT_DESCRIPTION	Predominantly installation of soft structures and planting of stream banks with deep rooted vegetation opposite road side. Restoration of bank hardening and flow diversion devices to protect infrastructure. Plant willow stakes in hardened structures.
ESTIMATED_COST	\$4,752,548.00
PROJECT_RANKING_EDUCATION	High
PROJECT_RANKING_ENVIRONMENT	High
PROJECT_RANKING_INSTALLATION	High



PROJECT_NUMBER	RC_Stream_35
SITE_LOCATION	Rock Creek main stem - Pennsylvania Avenue NW to the Potomac River
ADC_MAP_LOCATION	5528_A6
OWNERSHIP	Public
APPROXIMATE_LENGTH (Feet)	2198
DESCRIPTION_OF_EXISTING_CONDITIONS	Stream valley predominantly grass with 4 lane parkway adjacent to stream for length of stream segment. Stream predominantly hardened bank structures on both sides. Storm and sewer infrastructure present in stream valley.
PROJECT_DESCRIPTION	Predominantly restoration of hardened banks and flow diversion devices to protect infrastructure. Plant willow stakes in hardened structures and reforest grass areas.
ESTIMATED_COST	\$1,648,560.00
PROJECT_RANKING_EDUCATION	High
PROJECT_RANKING_ENVIRONMENT	High
PROJECT_RANKING_INSTALLATION	High

