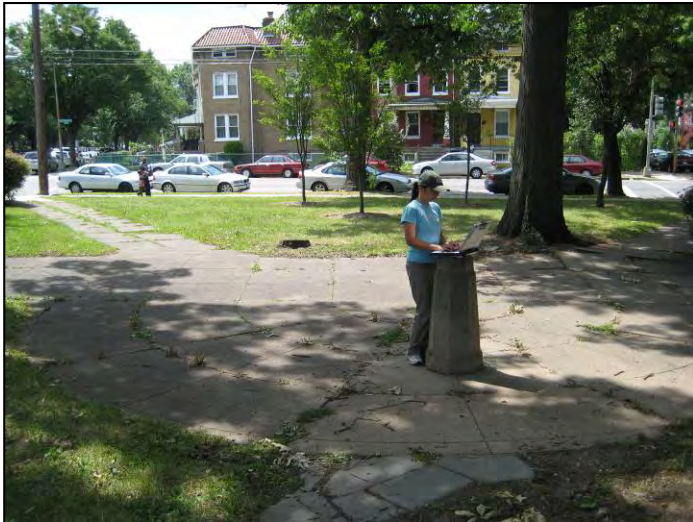


PROJECT_NUMBER	RC_LID_082
SITE_LOCATION	Triangle Park - North of Sherman Circle at Decatur Street NW, 7th Street, and Illinois Avenue NW
ADC_MAP_LOCATION	5408_G9
DRAINAGE_AREA_SIZE_(ACRES)	0.4456594
APPROXIMATE_IMPERVIOUSNESS	0.00%
OWNERSHIP	District
DESCRIPTION_OF_EXISTING_CONDITIONS	Triangle park with grass and small trees surrounded by roadway with curb and gutter.
PROJECT_DESCRIPTION	Bioretention in triangle to capture stormwater runoff from 7th Street NW
ESTIMATED_COST	\$15,598.00
PROJECT_RANKING_EDUCATION	Medium
PROJECT_RANKING_ENVIRONMENT	High
PROJECT_RANKING_INSTALLATION	Low



PROJECT_NUMBER	RC_LID_095
SITE_LOCATION	Triangle Park - Grant Circle at New Hampshire Avenue NW, 5th Street NW, and Upshur Street NW
ADC_MAP_LOCATION	5408_G10
DRAINAGE_AREA_SIZE_(ACRES)	0.3410675
APPROXIMATE_IMPERVIOUSNESS	0.00%
OWNERSHIP	District
DESCRIPTION_OF_EXISTING_CONDITIONS	Concrete triangle park surrounded by large shade trees.
PROJECT_DESCRIPTION	Remove concrete and install porous pavers.
ESTIMATED_COST	\$28,991.00
PROJECT_RANKING_EDUCATION	High
PROJECT_RANKING_ENVIRONMENT	Medium
PROJECT_RANKING_INSTALLATION	Medium



PROJECT_NUMBER	RC_LID_096
SITE_LOCATION	Traffic triangle islands at Randolph Street NW, Illinois Avenue NW, and 4th Street NW
ADC_MAP_LOCATION	5408_H10
DRAINAGE_AREA_SIZE_(ACRES)	0.5837541
APPROXIMATE_IMPERVIOUSNESS	0.00%
OWNERSHIP	District
DESCRIPTION_OF_EXISTING_CONDITIONS	Three traffic triangles with grass and new trees surrounded by roadway with curb and gutter.
PROJECT_DESCRIPTION	Potential to close one or more of the roadways, removal pavement to increase island size and create bioretention cells to treat stormwater from roadways.
ESTIMATED_COST	\$49,619.00
PROJECT_RANKING_EDUCATION	Medium
PROJECT_RANKING_ENVIRONMENT	High
PROJECT_RANKING_INSTALLATION	High



PROJECT_NUMBER RC_LID_097
SITE_LOCATION Park View Elementary - 3560 Warder St NW

ADC_MAP_LOCATION 5528_G1
DRAINAGE_AREA_SIZE_(ACRES) 1.2945
APPROXIMATE_IMPERVIOUSNESS 0.00%
OWNERSHIP District
DESCRIPTION_OF_EXISTING_CONDTIONS Large flat roofed building with external downspouts going into sewer system. Small grass areas and large impervious playground and parking areas.

PROJECT_DESCRIPTION Disconnect downspouts at the corner of Warder Street NW & Otis Street NW. Create bioretention cell to capture runoff. Green roof. Cisterns and/or bioretention boxes.

ESTIMATED_COST \$110,033.00
PROJECT_RANKING_EDUCATION High
PROJECT_RANKING_ENVIRONMENT High
PROJECT_RANKING_INSTALLATION High



PROJECT_NUMBER
SITE_LOCATION

RC_LID_098
Park View Elementary - 3560 Warder St NW

ADC_MAP_LOCATION
DRAINAGE_AREA_SIZE_(ACRES)
APPROXIMATE_IMPERVIOUSNESS
OWNERSHIP
DESCRIPTION_OF_EXISTING_CONDTIONS

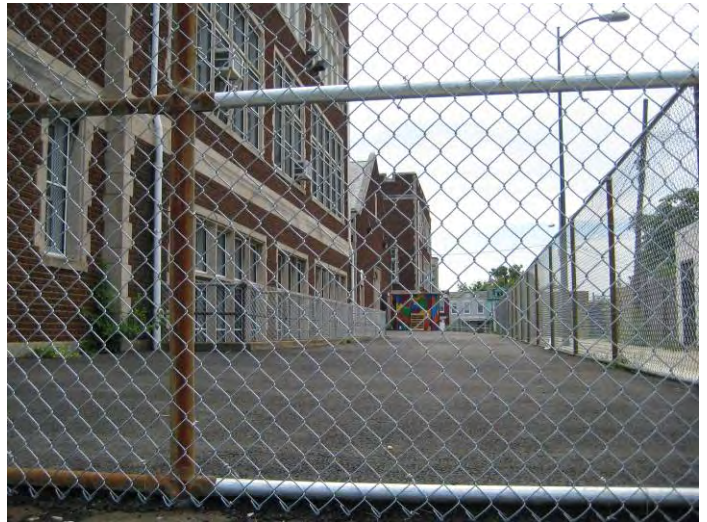
5528_G1
0.3391074
0.00%
District
Newly paved asphalt parking lot and play area.

PROJECT_DESCRIPTION

Remove asphalt and put in porous pavers.

ESTIMATED_COST
PROJECT_RANKING_EDUCATION
PROJECT_RANKING_ENVIRONMENT
PROJECT_RANKING_INSTALLATION

\$28,824.00
High
High
High



PROJECT_NUMBER RC_LID_099
SITE_LOCATION Parkview Recreation Center - Warder Street NW & Otis Place
NW

ADC_MAP_LOCATION 5528_G1
DRAINAGE_AREA_SIZE_(ACRES) 1.770802
APPROXIMATE_IMPERVIOUSNESS 0.00%
OWNERSHIP District
DESCRIPTION_OF_EXISTING_CONDITIONS Small recreation center with external downspouts, unused small swimming pool, heavily used basketball court. Mostly impervious surfaces.

PROJECT_DESCRIPTION Remove pool and install rain garden to treat impervious surfaces, install rain barrels for recreation center, porous asphalt or concrete for courts.

ESTIMATED_COST \$150,518.00
PROJECT_RANKING_EDUCATION High
PROJECT_RANKING_ENVIRONMENT High
PROJECT_RANKING_INSTALLATION High

PROJECT_NUMBER RC_LID_100
 SITE_LOCATION Petworth Recreation Center - Taylor Street NW between 8th Street and 9th Street NW
 ADC_MAP_LOCATION 5408_G10
 DRAINAGE_AREA_SIZE_(ACRES) 0.5847661
 APPROXIMATE_IMPERVIOUSNESS 0.00%
 OWNERSHIP District
 DESCRIPTION_OF_EXISTING_CONDTIONS Small recreation center with external downspouts, basketball court and other impervious areas, Grass area with newly planted trees.

PROJECT_DESCRIPTION Install bioretention along Taylor Street next to basketball courts to treat stormwater from courts and other impervious areas.

ESTIMATED_COST \$20,467.00
 PROJECT_RANKING_EDUCATION High
 PROJECT_RANKING_ENVIRONMENT High
 PROJECT_RANKING_INSTALLATION High



PROJECT_NUMBER RC_LID_101
SITE_LOCATION Petworth Recreation Center - Taylor Street NW between 8th Street and 9th Street NW
ADC_MAP_LOCATION 5408_G10
DRAINAGE_AREA_SIZE_(ACRES) 0.9029216
APPROXIMATE_IMPERVIOUSNESS 0.00%
OWNERSHIP District
DESCRIPTION_OF_EXISTING_CONDITIONS Small recreation center with external downspouts, basketball court and other impervious areas, Grass area with newly planted trees.

PROJECT_DESCRIPTION Remove concrete and install porous pavers, install bioretention planters or cisterns around building, plant shade trees by the tables & benches and in grass areas.

ESTIMATED_COST \$76,748.00
PROJECT_RANKING_EDUCATION High
PROJECT_RANKING_ENVIRONMENT High
PROJECT_RANKING_INSTALLATION High



PROJECT_NUMBER
SITE_LOCATION

RC_LID_107
Community Academy PCS - 1300 Allison St NW

ADC_MAP_LOCATION

5408_E9

DRAINAGE_AREA_SIZE_(ACRES)

3.733616

APPROXIMATE_IMPERVIOUSNESS

0.00%

OWNERSHIP

District

DESCRIPTION_OF_EXISTING_CONDTIONS

Internal downspout school building, flat roofed. Large impervious parking areas and open grass areas. Some erosion evident.

PROJECT_DESCRIPTION

Potential bioretention to treat runoff from parking lot and other impervious areas. Reduction of impervious surfaces. Green roof. Tree planting.

ESTIMATED_COST

\$317,357.00

PROJECT_RANKING_EDUCATION

High

PROJECT_RANKING_ENVIRONMENT

High

PROJECT_RANKING_INSTALLATION

High



PROJECT_NUMBER
SITE_LOCATION

RC_LID_108
Upshur Recreation Center - 4300 Arkansas Ave NW

ADC_MAP_LOCATION

5408_E10

DRAINAGE_AREA_SIZE_(ACRES)

5.930202

APPROXIMATE_IMPERVIOUSNESS

0.00%

OWNERSHIP

District

DESCRIPTION_OF_EXISTING_CONDITIONS
erosion.

Athletic fields with predominantly grass. Some active soil
Invasive kudzu. Large trees around periphery.

PROJECT_DESCRIPTION

Bioretention to treat stormwater from Upshur Street.
Bioretention along Iowa Ave. Removal of invasive kudzu along fence and trees. Stabilize soils at small soccer field. Bioretention near drains around fields. Tree planting.

ESTIMATED_COST

\$207,557.00

PROJECT_RANKING_EDUCATION

High

PROJECT_RANKING_ENVIRONMENT

High

PROJECT_RANKING_INSTALLATION

High



PROJECT_NUMBER RC_LID_109
SITE_LOCATION Upshur Recreation Center - 4300 Arkansas Ave NW

ADC_MAP_LOCATION 5408_E10
DRAINAGE_AREA_SIZE_(ACRES) 2.065558
APPROXIMATE_IMPERVIOUSNESS 0.00%
OWNERSHIP District
DESCRIPTION_OF_EXISTING_CONDTIONS Swimming pool and recreation center areas highly impervious.

PROJECT_DESCRIPTION Reduce impervious surfaces and install LID and/or put in porous pavers. Tree planting around pool area.

ESTIMATED_COST \$103,278.00
PROJECT_RANKING_EDUCATION High
PROJECT_RANKING_ENVIRONMENT High
PROJECT_RANKING_INSTALLATION High



PROJECT_NUMBER
SITE_LOCATION

RC_LID_110
Sharpe Health School - 4300 13th St NW

ADC_MAP_LOCATION

5408_F10

DRAINAGE_AREA_SIZE_(ACRES)

4.184975

APPROXIMATE_IMPERVIOUSNESS

0.00%

OWNERSHIP

District

DESCRIPTION_OF_EXISTING_CONDTIONS

Mostly internal downspout school building, flat roofed. Large impervious parking areas and open grass areas. Some erosion evident.

PROJECT_DESCRIPTION

Bioretention to capture runoff from parking lot. Install rain gardens at external downspouts. Green roof. Reduction of unnecessary impervious surfaces. Tree planting.

ESTIMATED_COST

\$355,723.00

PROJECT_RANKING_EDUCATION

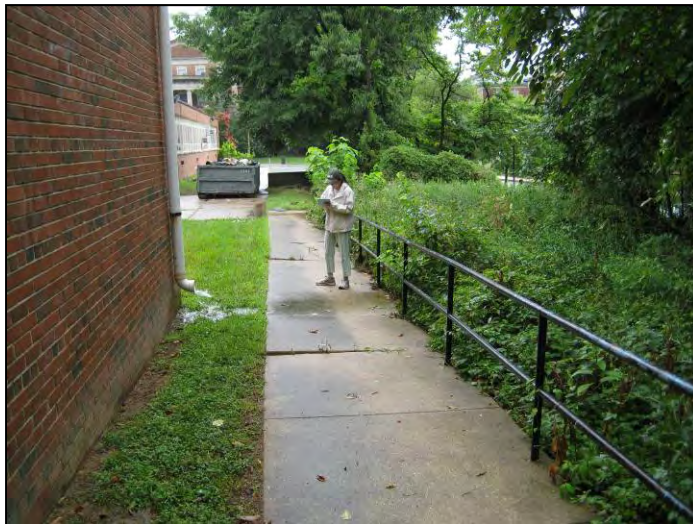
High

PROJECT_RANKING_ENVIRONMENT

High

PROJECT_RANKING_INSTALLATION

High



PROJECT_NUMBER
SITE_LOCATION

RC_LID_111
Powell Elementary School - 1350 Upshur St NW

ADC_MAP_LOCATION

5408_E10

DRAINAGE_AREA_SIZE_(ACRES)

2.986678

APPROXIMATE_IMPERVIOUSNESS

0.00%

OWNERSHIP

District

DESCRIPTION_OF_EXISTING_CONDTIONS

Mix of internal/external downspout school building, flat roofed.
Large impervious parking areas and ball fields, open grass areas.

PROJECT_DESCRIPTION

LID to capture runoff from playground and parking lot. Green
Roof. Tree planting. Cisterns and/or bioretention planters for downspouts.

ESTIMATED_COST

\$104,534.00

PROJECT_RANKING_EDUCATION

High

PROJECT_RANKING_ENVIRONMENT

High

PROJECT_RANKING_INSTALLATION

High



PROJECT_NUMBER	RC_LID_112
SITE_LOCATION	Roosevelt High School - 4301 13th St NW
ADC_MAP_LOCATION	5408_F10
DRAINAGE_AREA_SIZE_(ACRES)	5.691603
APPROXIMATE_IMPERVIOUSNESS	0.00%
OWNERSHIP	District
DESCRIPTION_OF_EXISTING_CONDITIONS	Mix of internal/external downspout school building. Mix of flat and sloped roofs. Steep slopes away from building.
PROJECT_DESCRIPTION	Green Roof. Tree planting. Cisterns and/or bioretention planters for downspouts. Terracing of steep hill.
ESTIMATED_COST	\$483,786.00
PROJECT_RANKING_EDUCATION	High
PROJECT_RANKING_ENVIRONMENT	High
PROJECT_RANKING_INSTALLATION	High

PROJECT_NUMBER	RC_LID_113
SITE_LOCATION	Triangle Park - Georgia Avenue NW and Iowa Avenue NW
ADC_MAP_LOCATION	5408_F10
DRAINAGE_AREA_SIZE_(ACRES)	1.582156
APPROXIMATE_IMPERVIOUSNESS	0.00%
OWNERSHIP	District/NPS
DESCRIPTION_OF_EXISTING_CONDITIONS with curb and gutter.	Grass and some trees surrounded by parking area, and road
PROJECT_DESCRIPTION parking lot. Tree planting.	Bioretention to treat runoff from Georgia Avenue and library
ESTIMATED_COST	\$55,375.00
PROJECT_RANKING_EDUCATION	High
PROJECT_RANKING_ENVIRONMENT	High
PROJECT_RANKING_INSTALLATION	High



PROJECT_NUMBER
SITE_LOCATION

RC_LID_114
MacFarland Middle School - 4400 Iowa Ave NW

ADC_MAP_LOCATION

4308_F10

DRAINAGE_AREA_SIZE_(ACRES)

8.289124

APPROXIMATE_IMPERVIOUSNESS

0.00%

OWNERSHIP

District

DESCRIPTION_OF_EXISTING_CONDTIONS

Flat roof building with internal downspouts. Grass and trees in front. Impervious parking behind building. Active erosion towards front sidewalks.

PROJECT_DESCRIPTION

Impervious reduction and permeable pavers for parking lot. Soil stabilization for erosion areas. Bioretention at delivery area storm drain. Green roof. Tree planting, Bioretention in ball field area.

ESTIMATED_COST

\$704,576.00

PROJECT_RANKING_EDUCATION

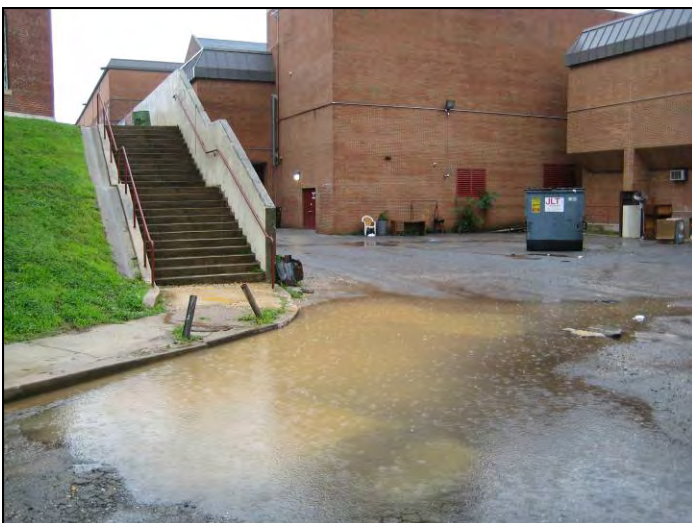
High

PROJECT_RANKING_ENVIRONMENT

High

PROJECT_RANKING_INSTALLATION

High



PROJECT_NUMBER
SITE_LOCATION

RC_LID_115
Triangle Park at Park Road NW & New Hampshire Ave NW

ADC_MAP_LOCATION
DRAINAGE_AREA_SIZE_(ACRES)
APPROXIMATE_IMPERVIOUSNESS
OWNERSHIP
DESCRIPTION_OF_EXISTING_CONDITIONS
and trees.

5528_F1
0.3816868
0.00%
District
Curb and gutter roadway surrounding small triangle with grass

PROJECT_DESCRIPTION

Bioretention to take water from Park Street, NW

ESTIMATED_COST
PROJECT_RANKING_EDUCATION
PROJECT_RANKING_ENVIRONMENT
PROJECT_RANKING_INSTALLATION

\$13,359.00
Medium
High
High



PROJECT_NUMBER

RC_LID_116

SITE_LOCATION
Street NW

Triangle Park at Ogden Street NW, Oak Street NW, and 14th

ADC_MAP_LOCATION

5528-E1

DRAINAGE_AREA_SIZE_(ACRES)

0.1699473

APPROXIMATE_IMPERVIOUSNESS

0.00%

OWNERSHIP

District

DESCRIPTION_OF_EXISTING_CONDITIONS
pavers and concrete.

Curb and gutter roadway surrounding small triangle with brick

PROJECT_DESCRIPTION
brick and put in ground cover plants.

Potential LID to take runoff from Ogden St, NW. Could remove

ESTIMATED_COST

\$5,948.00

PROJECT_RANKING_EDUCATION

Medium

PROJECT_RANKING_ENVIRONMENT

High

PROJECT_RANKING_INSTALLATION

High



PROJECT_NUMBER
SITE_LOCATION
Street NW

RC_LID_117
Triangle Park - Kansas Avenue NW, Quincy Street, and 13th

ADC_MAP_LOCATION
DRAINAGE_AREA_SIZE_(ACRES)
APPROXIMATE_IMPERVIOUSNESS
OWNERSHIP
DESCRIPTION_OF_EXISTING_CONDITIONS
and trees.

5528_F1
0.3989097
0.00%
District
Curb and gutter roadway surrounding small triangle with grass

PROJECT_DESCRIPTION
Avenue NW. Tree planting.

Bioretention to take water from Quincy Street, NW and Kansas

ESTIMATED_COST
PROJECT_RANKING_EDUCATION
PROJECT_RANKING_ENVIRONMENT
PROJECT_RANKING_INSTALLATION

\$13,962.00
Medium
High
High



PROJECT_NUMBER
SITE_LOCATION

RC_LID_118
Paul Reson School - 3700 10th St, NW

ADC_MAP_LOCATION

5528_F1

DRAINAGE_AREA_SIZE_(ACRES)

3.691514

APPROXIMATE_IMPERVIOUSNESS

0.00%

OWNERSHIP

District

DESCRIPTION_OF_EXISTING_CONDITIONS
parking areas with some grass and trees.

Internal downspout school building with flat roofs. Impervious

PROJECT_DESCRIPTION

Potential LID to capture runoff from parking lot along 10th Street. Bioretention in grass areas for other parking areas. Green roof.

ESTIMATED_COST

\$313,779.00

PROJECT_RANKING_EDUCATION

High

PROJECT_RANKING_ENVIRONMENT

High

PROJECT_RANKING_INSTALLATION

High



PROJECT_NUMBER
SITE_LOCATION

RC_LID_119
Raymond Recreation Center - 915 Spring Rd NW

ADC_MAP_LOCATION 5528_F1
DRAINAGE_AREA_SIZE_(ACRES) 2.907838
APPROXIMATE_IMPERVIOUSNESS 0.00%
OWNERSHIP District

DESCRIPTION_OF_EXISTING_CONDTIONS Small recreation center with external downspouts. Grass ball fields with a concrete swale. Concrete playground/ball courts area with slope towards school. Active erosion.

PROJECT_DESCRIPTION Replace concrete swale with bioswale. Install LID on slope treat runoff from impervious areas. Rain barrels on recreation center. Reduction of impervious surfaces, replace with pervious ones.

ESTIMATED_COST \$247,166.00
PROJECT_RANKING_EDUCATION High
PROJECT_RANKING_ENVIRONMENT High
PROJECT_RANKING_INSTALLATION High



PROJECT_NUMBER
SITE_LOCATION

RC_LID_120
Raymond Elementary School - 915 Spring Rd NW

ADC_MAP_LOCATION

5528_F1

DRAINAGE_AREA_SIZE_(ACRES)

3.764877

APPROXIMATE_IMPERVIOUSNESS

0.00%

OWNERSHIP

District

DESCRIPTION_OF_EXISTING_CONDTIONS

Internal downspout school building with flat roofs. Impervious parking and playground areas with some grass and trees.

PROJECT_DESCRIPTION

Reduce impervious playground area. Install bioretention to capture runoff from impervious parking/play area. Green roof on building. Tree planting.

ESTIMATED_COST

\$320,015.00

PROJECT_RANKING_EDUCATION

High

PROJECT_RANKING_ENVIRONMENT

High

PROJECT_RANKING_INSTALLATION

High



PROJECT_NUMBER
SITE_LOCATION

RC_LID_121
Bancroft Elementary - 1755 Newton St NW

ADC_MAP_LOCATION

5528_D1

DRAINAGE_AREA_SIZE_(ACRES)

3.079529

APPROXIMATE_IMPERVIOUSNESS

0.00%

OWNERSHIP

District

DESCRIPTION_OF_EXISTING_CONDTIONS

Mix of internal/external downspout school building, flat and sloped roof. Large impervious parking areas and ball fields, open grass areas. RiverSmart School site. Some conservation practices have been put in.

PROJECT_DESCRIPTION

Reduction of impervious surfaces for courtyard/parking lot/play area. Replace impervious areas with pervious. Additional LID by Rock Creek Park regenerative stormwater conveyance and bioretention.

ESTIMATED_COST

\$261,760.00

PROJECT_RANKING_EDUCATION

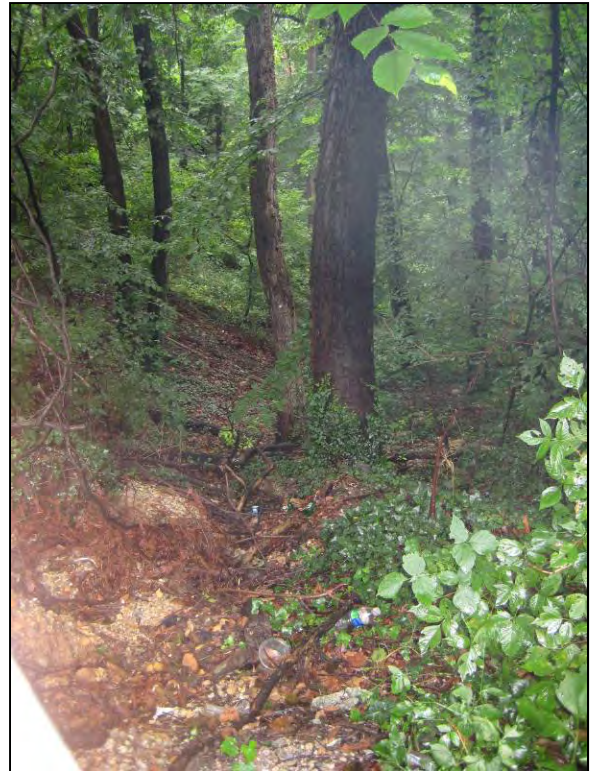
High

PROJECT_RANKING_ENVIRONMENT

High

PROJECT_RANKING_INSTALLATION

High



PROJECT_NUMBER RC_LID_122
SITE_LOCATION Triangle Park - Mt. Pleasant Street NW and Park Street NW

ADC_MAP_LOCATION 5528_D1
DRAINAGE_AREA_SIZE_(ACRES) 0.3461313
APPROXIMATE_IMPERVIOUSNESS 0.00%
OWNERSHIP District/NPS
DESCRIPTION_OF_EXISTING_CONDITIONS Triangle park with brick pavers and concrete and some benches and planters.

PROJECT_DESCRIPTION Reduce impervious surface and install bio retention to capture runoff from Park Street, NW.

ESTIMATED_COST \$17,307.00
PROJECT_RANKING_EDUCATION medium
PROJECT_RANKING_ENVIRONMENT medium
PROJECT_RANKING_INSTALLATION high



PROJECT_NUMBER
SITE_LOCATION

RC_LID_123
DPR Headquarters - 3149 16th St NW

ADC_MAP_LOCATION

5528_E2

DRAINAGE_AREA_SIZE_(ACRES)

1.396812

APPROXIMATE_IMPERVIOUSNESS

0.00%

OWNERSHIP

District

DESCRIPTION_OF_EXISTING_CONDITIONS
beds and trees. Tennis and playground areas.

Building with sloped roofs and surrounding parking lot planted

PROJECT_DESCRIPTION

Install bioretention in parking lot. Remove asphalt and install permeable paving and bioretention cell to capture water from walk way. Put bioretention on ball field side of tennis courts.

ESTIMATED_COST

\$118,729.00

PROJECT_RANKING_EDUCATION

High

PROJECT_RANKING_ENVIRONMENT

High

PROJECT_RANKING_INSTALLATION

High



PROJECT_NUMBER	RC_LID_124
SITE_LOCATION	Triangle Park - Mt. Pleasant Street NW and 16th Street NW
ADC_MAP_LOCATION	5528_E2
DRAINAGE_AREA_SIZE_(ACRES)	0.5364696
APPROXIMATE_IMPERVIOUSNESS	0.00%
OWNERSHIP	District
DESCRIPTION_OF_EXISTING_CONDITIONS	Raised grass triangle park with statue and benches. No photos.
PROJECT_DESCRIPTION	Regrade park to put in bioretention for stormwater from 16th Street. Reforestation.
ESTIMATED_COST	\$18,776.00
PROJECT_RANKING_EDUCATION	Medium
PROJECT_RANKING_ENVIRONMENT	High
PROJECT_RANKING_INSTALLATION	Low

PROJECT_NUMBER RC_LID_125
SITE_LOCATION Bell Multicultural High School - 3101 16th St NW

ADC_MAP_LOCATION 5528_E2
DRAINAGE_AREA_SIZE_(ACRES) 5.425196
APPROXIMATE_IMPERVIOUSNESS 0.00%
OWNERSHIP District
DESCRIPTION_OF_EXISTING_CONDTIONS Newly renovated building with flat roofs and internal downspouts. Impervious walkways and grass ball fields. Some newly planted trees.

PROJECT_DESCRIPTION Potential for bioretention for sidewalks in front of the school and to treat water from ball fields and basketball courts. Green roof installation.

ESTIMATED_COST \$461,142.00
PROJECT_RANKING_EDUCATION High
PROJECT_RANKING_ENVIRONMENT High
PROJECT_RANKING_INSTALLATION High



PROJECT_NUMBER RC_LID_128
SITE_LOCATION Paper Street Park - 17th Street NW and Shepherd St NW

ADC_MAP_LOCATION 5408-D10
DRAINAGE_AREA_SIZE_(ACRES) 2.225958
APPROXIMATE_IMPERVIOUSNESS 0.00%
OWNERSHIP District
DESCRIPTION_OF_EXISTING_CONDTIONS Open grass field with jersey barriers.

PROJECT_DESCRIPTION Install LID to capture runoff from 17th Street NW and Shepherd St. NW

ESTIMATED_COST \$77,909.00
PROJECT_RANKING_EDUCATION Low
PROJECT_RANKING_ENVIRONMENT High
PROJECT_RANKING_INSTALLATION High



PROJECT_NUMBER RC_LID_129
SITE_LOCATION Triangle Park - 18th Street NW and Argyle Street NW

ADC_MAP_LOCATION 5408-D9
DRAINAGE_AREA_SIZE_(ACRES) 6.613641E-02
APPROXIMATE_IMPERVIOUSNESS 0.00%
OWNERSHIP District
DESCRIPTION_OF_EXISTING_CONDITIONS Triangle park with grass area and large trees.

PROJECT_DESCRIPTION Install bioretention to take runoff from 18th St, NW.

ESTIMATED_COST \$2,315.00
PROJECT_RANKING_EDUCATION Low
PROJECT_RANKING_ENVIRONMENT High
PROJECT_RANKING_INSTALLATION High



PROJECT_NUMBER
SITE_LOCATION
NW

RC_LID_130
Parkland - Arkansas Avenue NW and Piney Branch Parkway

ADC_MAP_LOCATION
DRAINAGE_AREA_SIZE_(ACRES)
APPROXIMATE_IMPERVIOUSNESS
OWNERSHIP
DESCRIPTION_OF_EXISTING_CONDTIONS

5408_E10
3.098988
0.00%
NPS
Large grassy open field adjacent to Arkansas Avenue NW and Piney Branch Parkway.

PROJECT_DESCRIPTION
Parkway and Arkansas Avenue NW. Reforestation.

Installation of bioretention to take runoff from Piney Branch

ESTIMATED_COST
PROJECT_RANKING_EDUCATION
PROJECT_RANKING_ENVIRONMENT
PROJECT_RANKING_INSTALLATION

\$108,465.00
Medium
High
Low



PROJECT_NUMBER	RC_LID_283
SITE_LOCATION	Triangle Park - Kansas Avenue NW, Quincy Street, and 13th Street NW
ADC_MAP_LOCATION	5528_F1
DRAINAGE_AREA_SIZE_(ACRES)	0.1868047
APPROXIMATE_IMPERVIOUSNESS	0.00%
DESCRIPTION_OF_EXISTING_CONDITIONS	Grass triangle with painted triangle on Kansas Avenue, NW and 13th Street NW
PROJECT_DESCRIPTION	Triangle could be widened by eliminating painted roadway and made into bioretention to take water from 13th and Kansas. Potential to completely close part of triangle.
ESTIMATED_COST	\$15,878.00
PROJECT_RANKING_EDUCATION	Medium
PROJECT_RANKING_ENVIRONMENT	High
PROJECT_RANKING_INSTALLATION	High



PROJECT_NUMBER	RC_LID_284
SITE_LOCATION	Triangle Park - Spring Place NW and Perry Place NW
ADC_MAP_LOCATION	5528_E1
DRAINAGE_AREA_SIZE_(ACRES)	0.1179951
APPROXIMATE_IMPERVIOUSNESS	0.00%
DESCRIPTION_OF_EXISTING_CONDITIONS	Small grass island in roadway with curb and gutter. No photo.
PROJECT_DESCRIPTION	Potential to expand triangle and put in bioretention.
ESTIMATED_COST	\$10,030.00
PROJECT_RANKING_EDUCATION	Medium
PROJECT_RANKING_ENVIRONMENT	Medium
PROJECT_RANKING_INSTALLATION	High

PROJECT_NUMBER RC_LID_318
SITE_LOCATION End of Mt. Pleasant Street NW - North of Newton Street NW

ADC_MAP_LOCATION 5528_D1
DRAINAGE_AREA_SIZE_(ACRES) 0.3635293
APPROXIMATE_IMPERVIOUSNESS 0.00%
DESCRIPTION_OF_EXISTING_CONDITIONS Moderate erosion from roadway dead end and Bancroft ES.
Stormwater from end of Mt. Pleasant Street NW directed into Piney Branch stream valley.

PROJECT_DESCRIPTION Install regenerative stormwater conveyance and/or
bioretention (green end) for stormwater coming from street and school going into Piney Branch Park.

ESTIMATED_COST \$12,724.00
PROJECT_RANKING_EDUCATION High
PROJECT_RANKING_ENVIRONMENT High
PROJECT_RANKING_INSTALLATION High



PROJECT_NUMBER RC_LID_319
SITE_LOCATION Piney Branch Park - north of Ingleside Terrace and south of Piney Branch Parkway

ADC_MAP_LOCATION 5528_D1
DRAINAGE_AREA_SIZE_(ACRES) 1.186722
APPROXIMATE_IMPERVIOUSNESS 0.00%
DESCRIPTION_OF_EXISTING_CONDITIONS Outfall with severe erosion. Stormwater from Ingleside Terrace NW directed into Piney Branch stream valley.

PROJECT_DESCRIPTION Install regenerative stormwater conveyance at outfall from Ingleside Terrace NW south of Piney Branch Parkway.

ESTIMATED_COST \$41,535.00
PROJECT_RANKING_EDUCATION High
PROJECT_RANKING_ENVIRONMENT High
PROJECT_RANKING_INSTALLATION High



PROJECT_NUMBER RC_LID_320
SITE_LOCATION Alley off Park Road NW - south of bridge over Piney Branch Parkway
ADC_MAP_LOCATION 5528_C1
DRAINAGE_AREA_SIZE_(ACRES) 1.641734
APPROXIMATE_IMPERVIOUSNESS 0.00%
DESCRIPTION_OF_EXISTING_CONDITIONS Erosion from alleyway dead end. Stormwater from end of alley off Park Road NW directed into Piney Branch stream valley south of Piney Branch Parkway.
PROJECT_DESCRIPTION Install regenerative stormwater conveyance and/or bioretention (green end) for stormwater coming from alley going into Piney Branch Park.
ESTIMATED_COST \$57,461.00
PROJECT_RANKING_EDUCATION High
PROJECT_RANKING_ENVIRONMENT High
PROJECT_RANKING_INSTALLATION High



PROJECT_NUMBER	RC_LID_321
SITE_LOCATION	End of Pierce Mill Road NW - west of Park Drive NW
ADC_MAP_LOCATION	5528_C1
DRAINAGE_AREA_SIZE_(ACRES)	1.386816
APPROXIMATE_IMPERVIOUSNESS	0.00%
DESCRIPTION_OF_EXISTING_CONDITIONS	Moderate erosion from roadway outfall off Pierce Mill Road NW. Stormwater from end of Pierce Mill Road NW directed into Piney Branch stream valley.
PROJECT_DESCRIPTION	Install regenerative stormwater conveyance at outfall from Pierce Mill Road NW south of Piney Branch Parkway.
ESTIMATED_COST	\$48,539.00
PROJECT_RANKING_EDUCATION	Medium
PROJECT_RANKING_ENVIRONMENT	High
PROJECT_RANKING_INSTALLATION	High



PROJECT_NUMBER RC_LID_322
SITE_LOCATION Piney Branch Park - south of Argyle Street and north of Piney Branch Parkway
ADC_MAP_LOCATION 5528_C1
DRAINAGE_AREA_SIZE_(ACRES) 15.96729
APPROXIMATE_IMPERVIOUSNESS 0.00%
DESCRIPTION_OF_EXISTING_CONDITIONS Three outfalls with moderate erosion. Stormwater from Argyle Street NW directed into Piney Branch stream valley.

PROJECT_DESCRIPTION Install regenerative stormwater conveyances at three outfalls from Argyle Street NW north of Piney Branch Parkway.

ESTIMATED_COST \$420,000.00
PROJECT_RANKING_EDUCATION Medium
PROJECT_RANKING_ENVIRONMENT High
PROJECT_RANKING_INSTALLATION High



PROJECT_NUMBER RC_LID_323
SITE_LOCATION Hiking Path - south of Piney Branch Parkway NW from Beach
Drive to 17th Street NW

ADC_MAP_LOCATION 5528_C1&D1

DRAINAGE_AREA_SIZE_(ACRES) 0.598944

APPROXIMATE_IMPERVIOUSNESS 0.00%

DESCRIPTION_OF_EXISTING_CONDTIONS Pathway located on steep, highly erodible slopes. Path eroding in locations and sending sediment into intermittent streams leading to Piney Branch.

PROJECT_DESCRIPTION Comprehensive path work to stabilize path and surrounding slopes. Revegetate area. Enforce leash laws & control deer population to help plants survive

ESTIMATED_COST \$20,963.00

PROJECT_RANKING_EDUCATION High

PROJECT_RANKING_ENVIRONMENT High

PROJECT_RANKING_INSTALLATION High



PROJECT_NUMBER
SITE_LOCATION

RC_LID_360
Clark Elementary School - 4501 7th Street NW

ADC_MAP_LOCATION

5408_G9

DRAINAGE_AREA_SIZE_(ACRES)

7.326396

APPROXIMATE_IMPERVIOUSNESS

0.00%

DESCRIPTION_OF_EXISTING_CONDITIONS

Large flat roofed building with internal downspouts, mix of paved playgrounds and parking lots and grass sports fields surrounding the building.

PROJECT_DESCRIPTION

Install bioretention to capture runoff from parking lot and playground area. Reduce impervious surfaces. Green roof. Reforestation. Bioretention to take stormwater from 7th Street and Kansas Avenue.

ESTIMATED_COST

\$622,744.00

PROJECT_RANKING_EDUCATION

High

PROJECT_RANKING_ENVIRONMENT

High

PROJECT_RANKING_INSTALLATION

High



PROJECT_NUMBER	RC_LID_361
SITE_LOCATION	WMATA Bus Barn - 4701 14th Street NW
ADC_MAP_LOCATION	5408_F9
DRAINAGE_AREA_SIZE_(ACRES)	6.27722
APPROXIMATE_IMPERVIOUSNESS	0.00%
DESCRIPTION_OF_EXISTING_CONDITIONS	WMATA bus barn. Large flat roof facility and impervious parking area.
PROJECT_DESCRIPTION	Install green roof and pervious paving for parking area.
ESTIMATED_COST	\$627,722.00
PROJECT_RANKING_EDUCATION	Low
PROJECT_RANKING_ENVIRONMENT	High
PROJECT_RANKING_INSTALLATION	Medium



PROJECT_NUMBER	RC_LID_363
SITE_LOCATION	Barnard Elementary School - 430 Decatur St NW
ADC_MAP_LOCATION	5408_G9&H9
DRAINAGE_AREA_SIZE_(ACRES)	4.886082
APPROXIMATE_IMPERVIOUSNESS	0.00%
DESCRIPTION_OF_EXISTING_CONDITIONS	Large flat roof building with internal downspouts. Parking area and playground that slopes to open grass field. Newly renovated.
PROJECT_DESCRIPTION	Install bioretention to capture runoff from parking lot and playground. Green roof. Tree Planting.
ESTIMATED_COST	\$415,317.00
PROJECT_RANKING_EDUCATION	High
PROJECT_RANKING_ENVIRONMENT	High
PROJECT_RANKING_INSTALLATION	Low

PROJECT_NUMBER	RC_LID_365
SITE_LOCATION	Sts. Constantine and Helen Greek Orthodox Church - 4115 16th Street Northwest
ADC_MAP_LOCATION	5408_E10
DRAINAGE_AREA_SIZE_(ACRES)	2.4895
APPROXIMATE_IMPERVIOUSNESS	0.00%
DESCRIPTION_OF_EXISTING_CONDITIONS	Church and school grounds almost entirely paved. School has flat roof with internally plumbed downspouts. Church is a mix of flat & sloped roofs.
PROJECT_DESCRIPTION	Green roofs on buildings. Reduce impervious surfaces from parking areas and play areas and replace with pervious ones. Where possible install bioretention.
ESTIMATED_COST	\$211,608.00
PROJECT_RANKING_EDUCATION	High
PROJECT_RANKING_ENVIRONMENT	High
PROJECT_RANKING_INSTALLATION	Medium