



# Lead Task Force

March 31, 2022

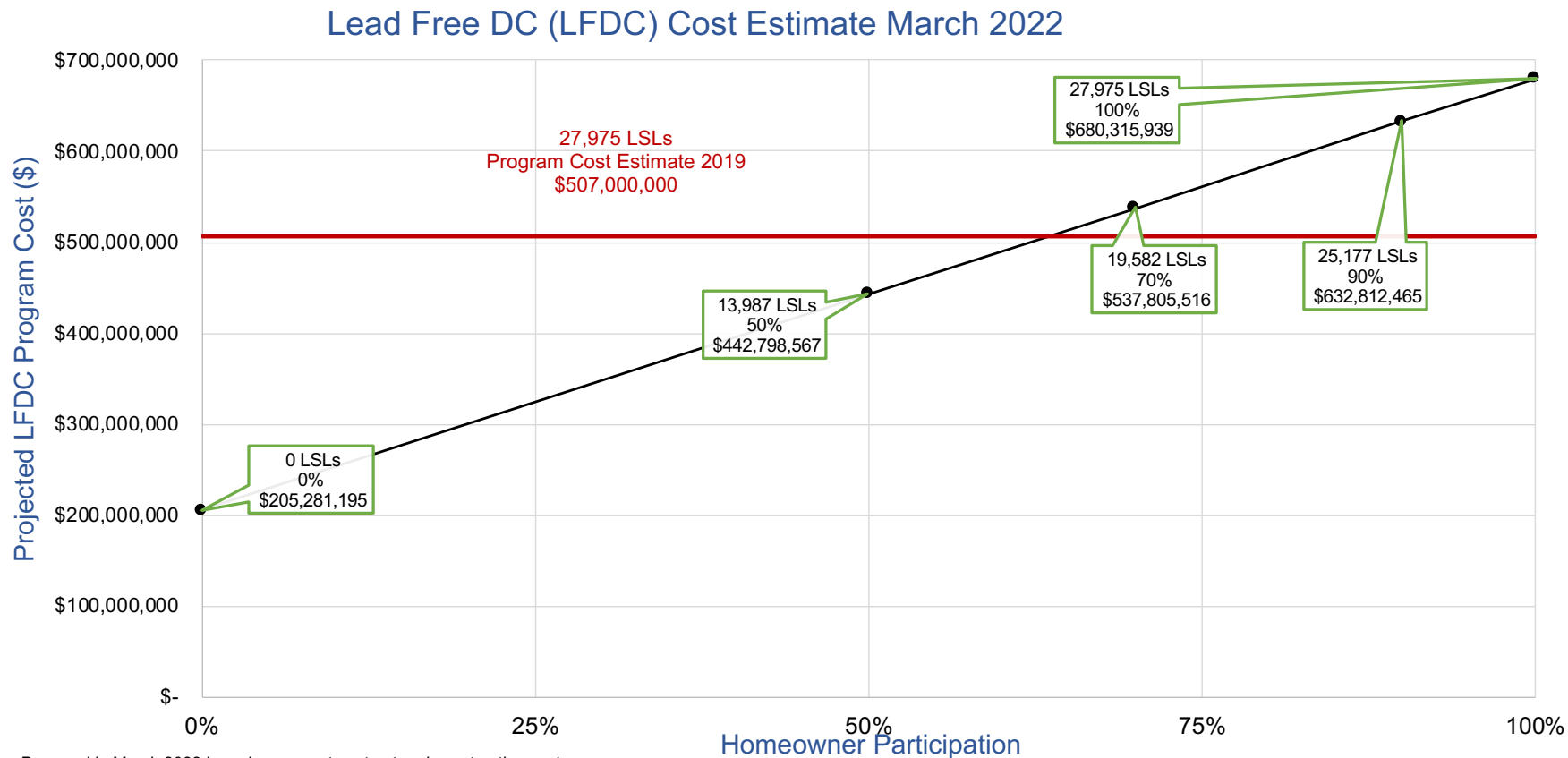
John Deignan  
Program Manager, Lead Services





# Summary of Revised Planning Level Cost Estimate– March 2022

- Most significant differences compared to planning estimate in June 2021 Plan:
  - Includes test-pitting verification of ~48,000 services based on historic records
  - Includes communication and outreach cost

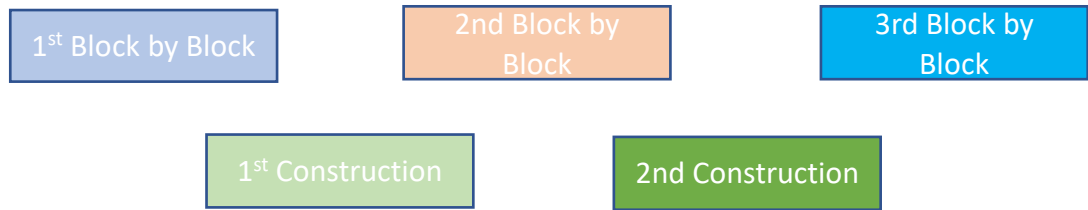
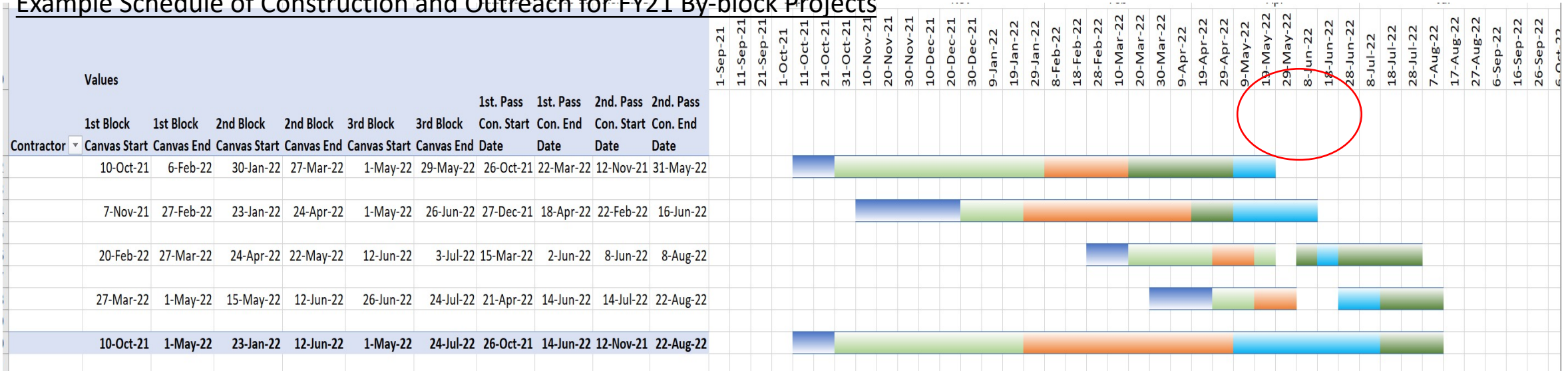




# Outreach for FY21 By-block LSR Projects

- Third round of door-to-door direct engagement added to construction process to obtain additional agreements. Multiple mobilizations impact costs.
- B-block projects have included a significant communication and outreach cost not quantified in June 2021 estimate

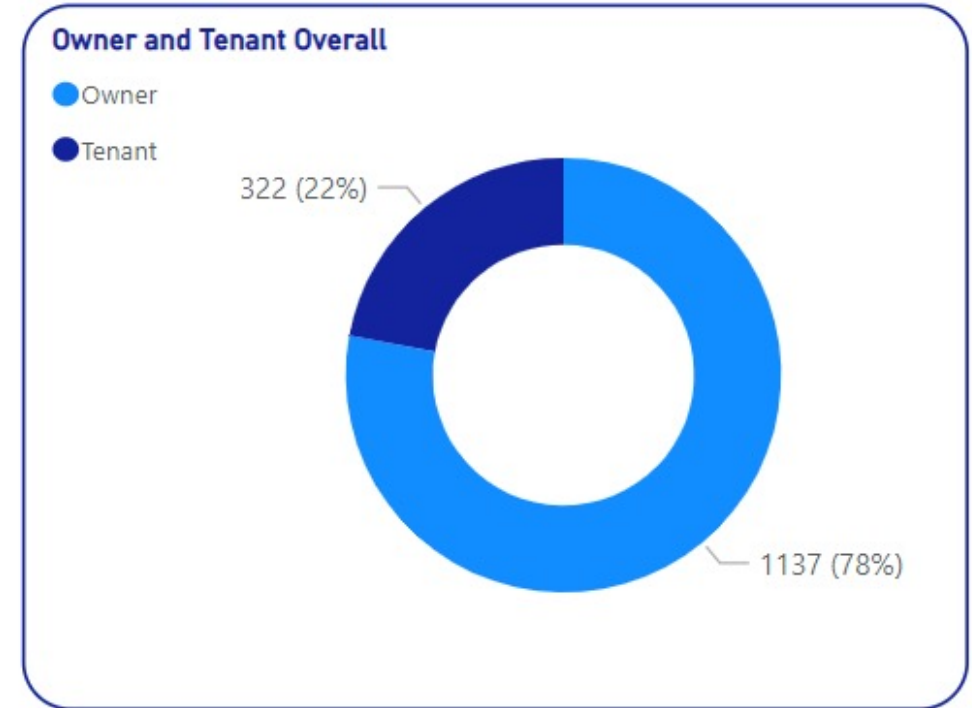
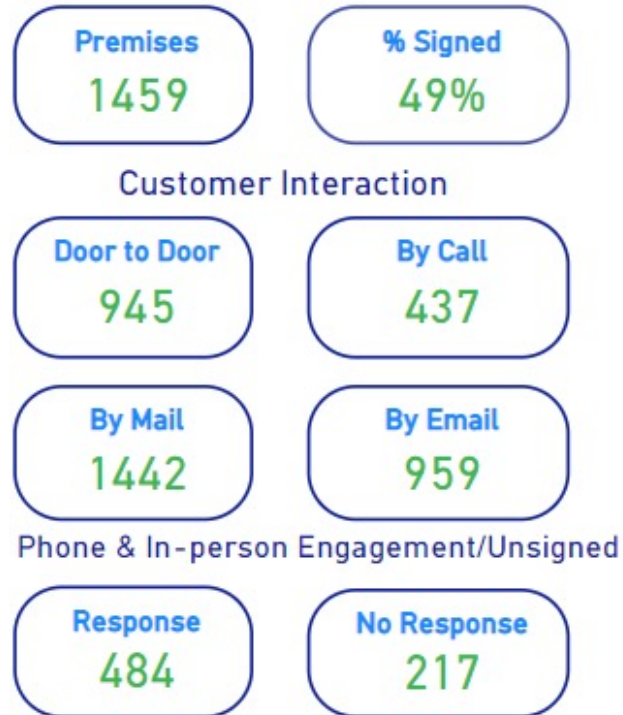
Example Schedule of Construction and Outreach for FY21 By-block Projects



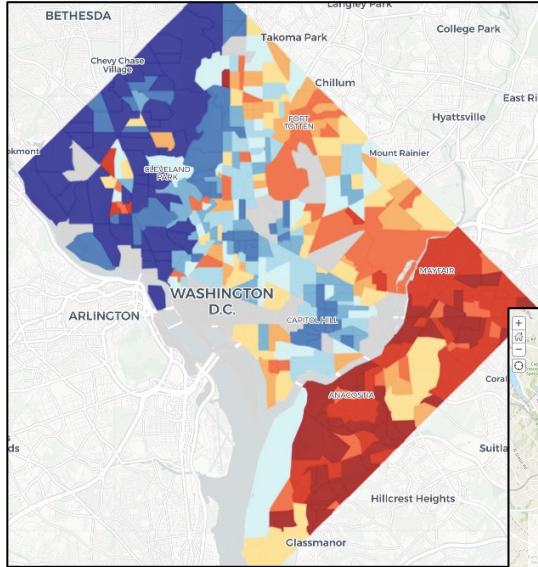


# Block-by-block Outreach (*snapshot 3/16*)

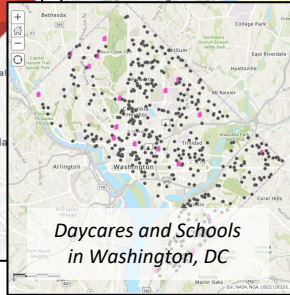
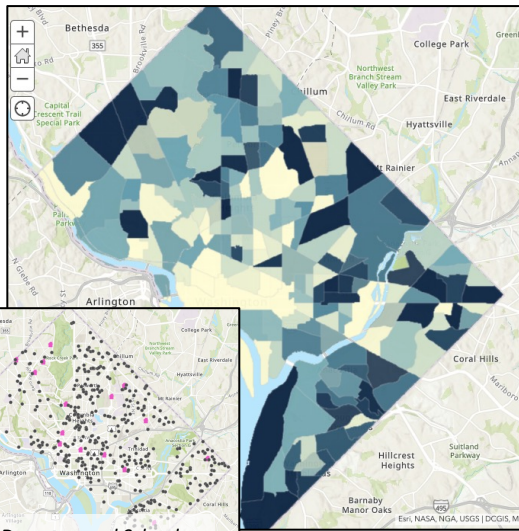
- Overall % of signed agreements is currently at  $725/2,650 = 27\%$ .
  - 49% of agreements on blocks under construction
- 12% ROI of door-to-door to obtain agreement



Area Deprivation Index in Washington, DC



Density of Children in Washington, DC



- Projects executed based on system improvement (water quality) & social impact (equity) of LSL replacement.
- The model prioritizes LSL replacement projects for:
  - **Underserved Areas**, measured by Area Deprivation Index
  - **Vulnerable Populations**, e.g. Children, Schools and Daycares

Water Quality Factors for Priority Score

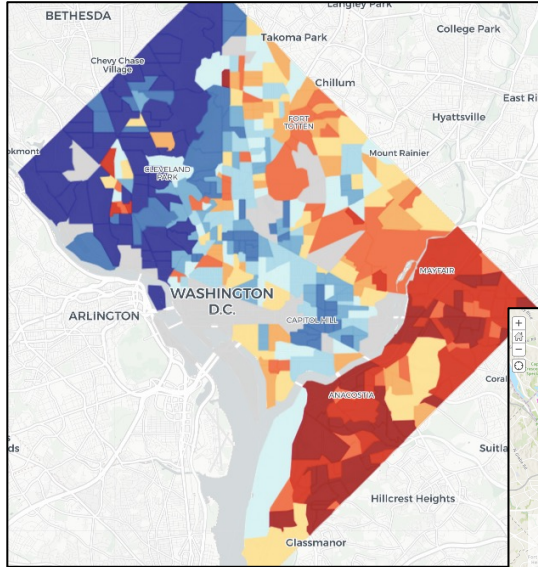
LOF Category	Weighting
<b>Physical Condition</b>	<b>10%</b>
<i>Main Breaks</i>	10%
<b>Performance</b>	<b>90%</b>
<i>Iron Concentration</i>	27%
<i>Chlorine Concentration</i>	9%
<i>Service Line Material</i>	54%

Equity Factors for Priority Score

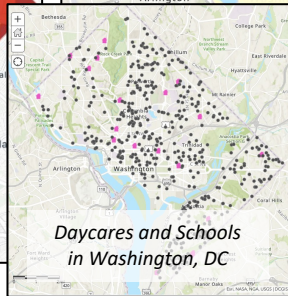
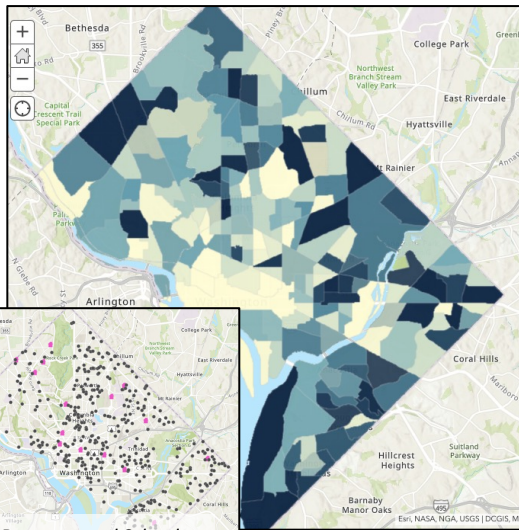
COF Category	Weighting
<b>Health/Social Equity</b>	<b>50%</b>
<i>Area Deprivation Index</i>	50%
<b>Vulnerable Populations</b>	<b>50%</b>
<i>Children under 18</i>	20%
<i>Licensed Childcare Facility</i>	30%

- Expanding legal definition of “emergency” under D.C. Law 22-241 will facilitate free private-side replacements for populations at risk (e.g. children, pregnant individuals).

Area Deprivation Index in Washington, DC



Density of Children in Washington, DC



- Additional data points to capture vulnerable populations:
  - [Infants Under 1 \(2015-2019\):](#)  
*Attribute Definition: FERTILITY: Number of women 15 to 50 years old who had a birth in the past 12 months*
  - Coordination with DC Health

Water Quality Factors for Priority Score

LOF Category	Weighting
<b>Physical Condition</b>	<b>10%</b>
<i>Main Breaks</i>	10%
<b>Performance</b>	<b>90%</b>
<i>Iron Concentration</i>	27%
<i>Chlorine Concentration</i>	9%
<i>Service Line Material</i>	54%

Equity Factors for Priority Score

COF Category	Weighting
<b>Health/Social Equity</b>	<b>50%</b>
<i>Area Deprivation Index</i>	50%
<b>Vulnerable Populations</b>	<b>50%</b>
<i>Children under 18</i>	20%
<i>Licensed Childcare Facility</i>	30%

- Expanding legal definition of “emergency” under D.C. Law 22-241 will facilitate free private-side replacements for populations at risk (e.g. children, pregnant individuals).



# Lead Contact Info & Websites



[lead@dcwater.com](mailto:lead@dcwater.com)

(202) 787-4044

[www.dewater.com/lead](http://www.dewater.com/lead)

[www.dewater.com/leadmap](http://www.dewater.com/leadmap)

[www.dewater.com/leadfreedcplan](http://www.dewater.com/leadfreedcplan)

