

AMIDON FIELD STORMWATER RETROFIT PROJECT

JANUARY 23, 2019

CECILIA LANE

Environmental Protection Specialist
Watershed Protection Division
Department of Energy & Environment
cecilia.lane@dc.gov



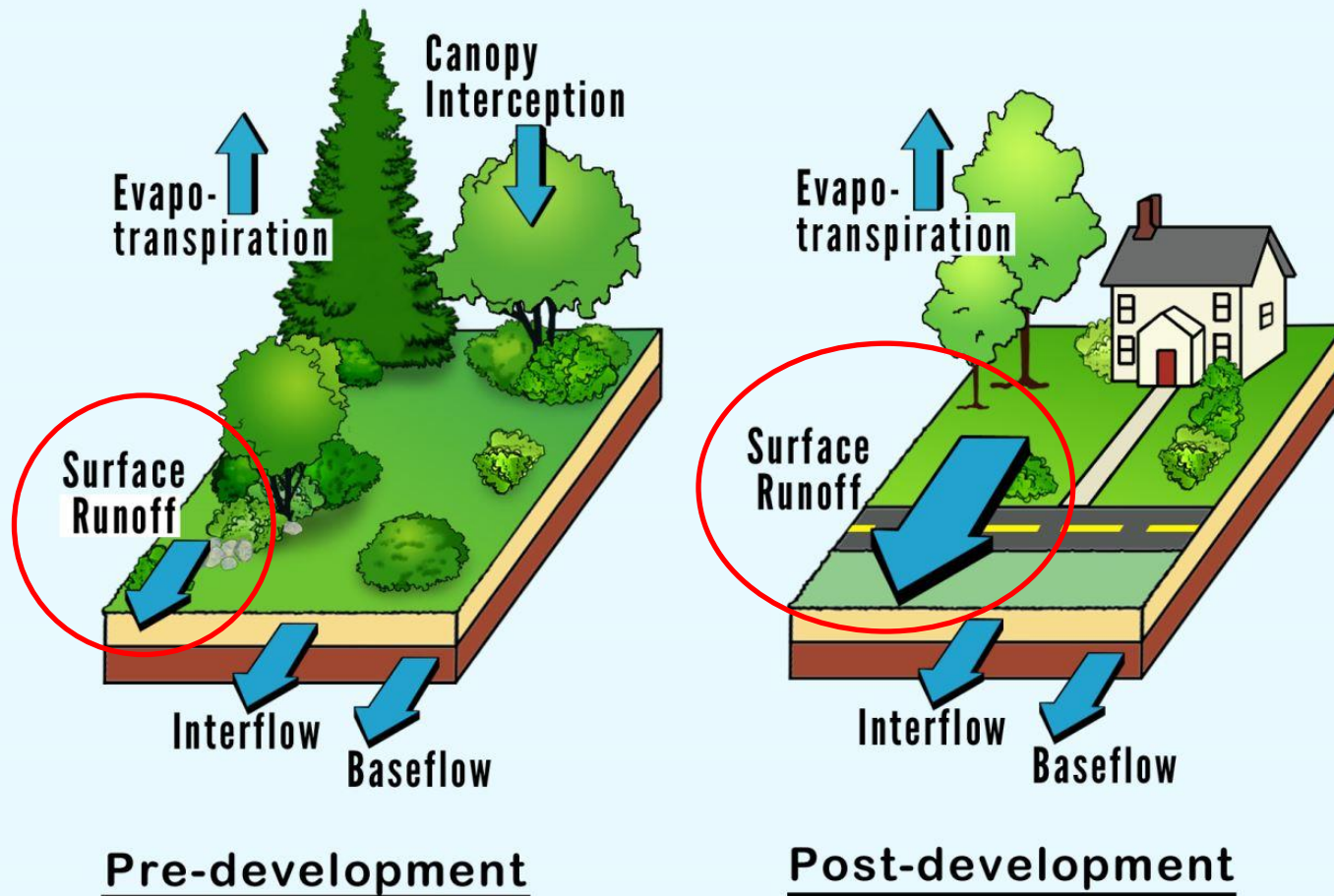
GOVERNMENT OF THE
DISTRICT OF COLUMBIA
MURIEL BOWSER, MAYOR

PROJECT LOCATION



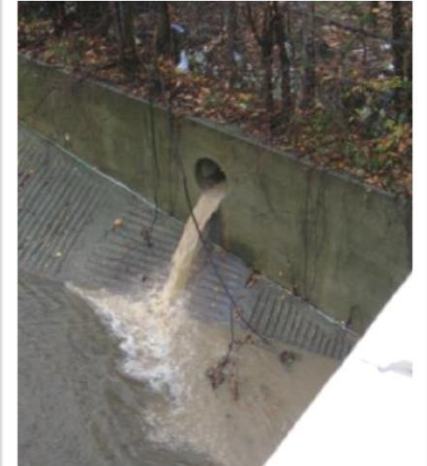
BACKGROUND

Figure 1.1 Water Balance at a Developed and Underdeveloped Site
(Source: Schueler, 1987)



Surface runoff is minimal in an undeveloped site, but dominates the water balance at a highly impervious site.

PROBLEM OF STORMWATER POLLUTION



EXISTING CONDITIONS



RESTORATION APPROACH

Most stormwater practices all work the same way: they collect stormwater runoff and use or mimic natural processes that result in the infiltration, evapotranspiration or use of stormwater in order to protect water quality and associated aquatic habitat (EPA).

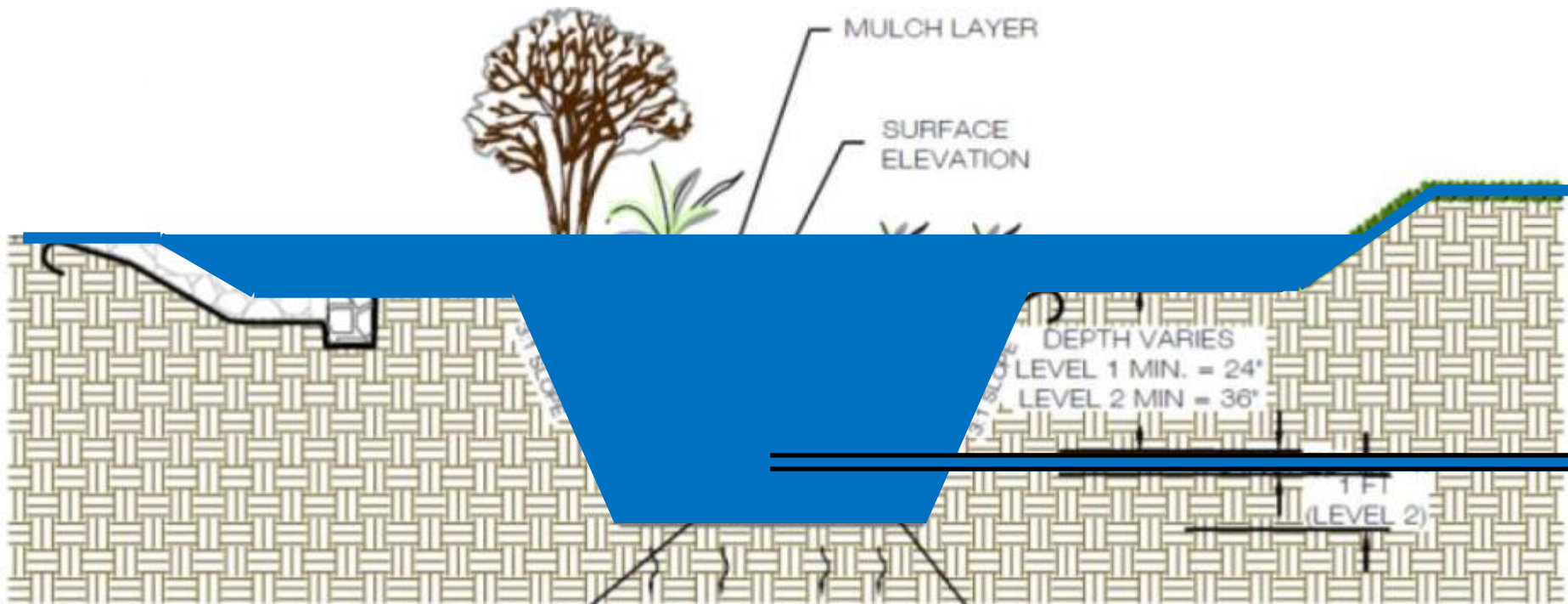
Slow it down, Spread it Out, Soak it In !

Some examples follow...

BIORETENTION



BIORETENTION: HOW IT WORKS



BIOSWALES



PERMEABLE PAVEMENT



SUBSOILING APPLICATION

- De-compacts soils in heavily used areas
- Allows for better infiltration of stormwater
- More room for roots = better vegetation

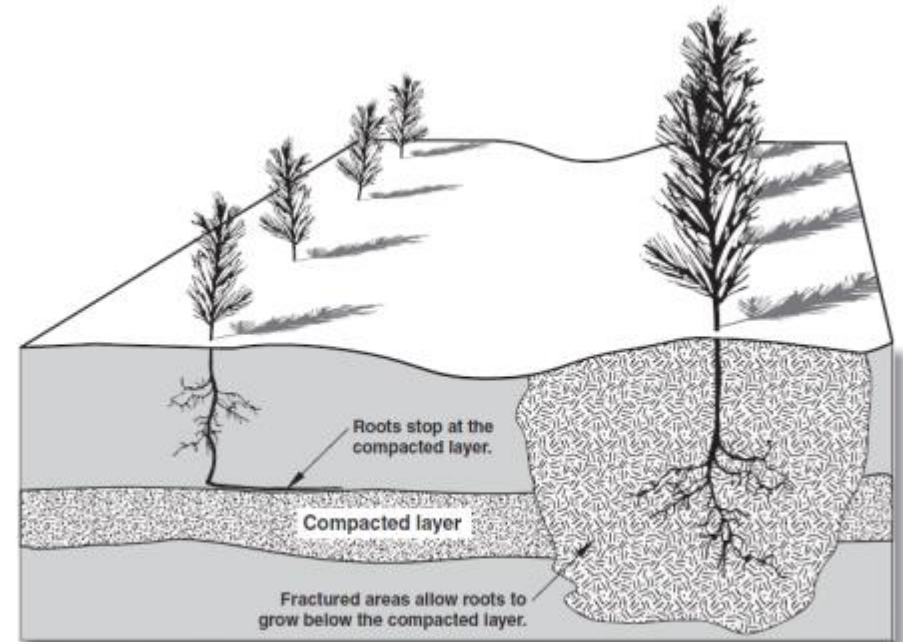


Figure 2—This illustration shows how fracture zones created by a subsoiler can help promote deep, healthy root systems. Ideally, the soil is fractured with minimal disruption to the soil surface and existing plant life.



1-4 weeks depending on approach:

- Soil compaction
- Desired depth
- Soil moisture
- Compost or other amendments

OBJECTIVES

- Treat maximum amount of stormwater from the site in the most cost effective way
- Work only on District land
- Minimal impacts to the community
- Address existing stormwater issues
- Development of a community amenity when possible
- Educational opportunities



PROJECT TIMELINE

- November 2018: contract awarded
- November – January 2019: field assessment (soil assessment, determination of extent of tree roots, etc.)
- Late spring/early summer: subsoiling to occur
- Will coordinate with DPR programming and school
- 1 more public meeting: ~ late February
 - Present recommendations
 - Timeline for implementation
- September 30, 2019: project complete

FAQs

- How do we find our project sites?
 - Enthusiastic landowners!
 - Funding sources
 - Large areas of untreated impervious cover
 - More impactful locations
- What can I do?
 - RiverSmart Homes
 - Rain Gardens
 - Permeable Pavers
 - Rain Barrels
 - Tree Planting
 - “BayScaping”



QUESTIONS

