



Learn to Install Your Own Rain Barrel

Rooting DC 2023

Queen Richardson
Maya Sterett



TAG THIS PRESENTATION @DOEE_DC + @ALLIANCEFORBAY

AGENDA



1

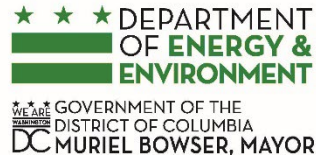
RiverSmart Homes Overview

2

How to Install a Rain Barrel

3

Q & A



@ALLIANCEFORBAY



@DOEE_DC





RIVERSMART HOMES PROGRAM GOALS

- Reduce volume of stormwater runoff
- Prevent erosion
- Recharge groundwater
- Increase habitat diversity
- Promote conservation



RIVERSMART HOMES BMPS



SHADE TREES



BAYSCAPING



PERMEABLE PAVERS



RAIN BARRELS



RAIN GARDENS

RIVERSMART HOMES PROCESS

2-4 Months

3-8 Months



↑ Homeowner applies online and is added to a waitlist

- ↑
- A DOEE auditor goes to the home
 - The audit is free
 - The homeowner must be present

- ↑
- Auditor prepares a report
 - Homeowner selects what they want installed
 - Auditor sends their preferences to the nonprofit partners

↑ Non-Profit partner or contractor installs the projects

↑ Homeowner is responsible for maintaining their feature



HOW TO GET A RAIN BARREL THROUGH RIVERSMART HOMES

Rain Barrel
Grant
Program

Rain Barrel
Rebate
Program

THE TRADEOFF: Financial Incentive vs Wait Time

RIVERSMART HOMES RAIN BARREL GRANT PROGRAM

OVERVIEW

- Barrels cost \$50 or \$70
- The Alliance's sub-contractors install the barrel for you
- Each barrel comes with a 30 foot soaker hose
- Limit 2 per property

THE TRADEOFF:

- Rain barrels are cheaper through the grant program, but the wait time is about 3-4 months from when the audit is conducted



RIVERSMART HOMES RAIN BARREL REBATE PROGRAM

OVERVIEW

- Rebate of \$2 per gallon of capacity
- Maximum rebate of \$1,000 per property
- Homeowner's need to install the barrel themselves or hire someone to install it

THE TRADEOFF:

- There's a lot more options in the kind of barrel that can be installed and the wait time is dependent on the homeowner, but the amount of financial assistance isn't as high



PRE-APPROVED RAIN BARRELS



Aquabarrel
Cylinder



Earthminded
RainStation 50



Bushman Slimline
Rain Tank



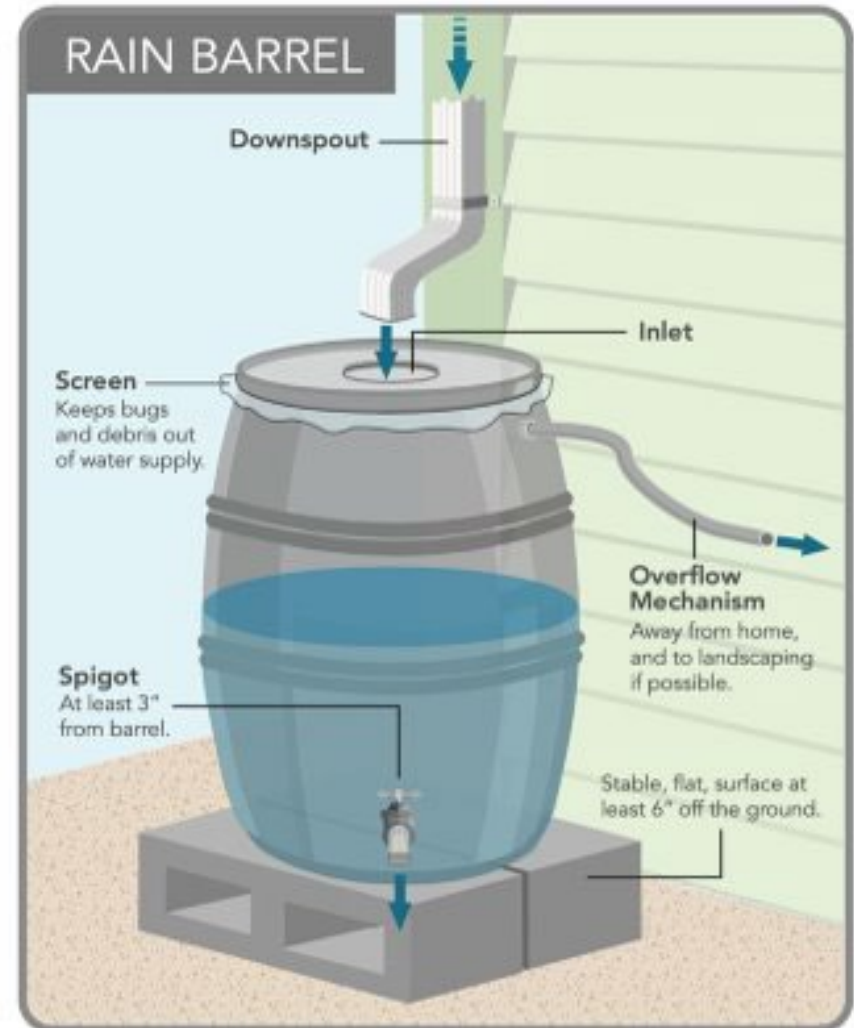
Rainwater HOG

AND MORE!

RAIN BARREL CRITERIA

IN ORDER TO QUALIFY FOR A REBATE, A RAIN BARREL MUST FIT THE FOLLOWING CRITERIA:

- **Volume:** At least 50 gallons
- **Inlet Screen:** The inlet must be screened/filtered to prevent mosquitos from breeding
- **Overflow:** Must be an overflow pipe to direct excess water once barrel is full
- **Spigot:** Must be within 3 inches from bottom
- **Height:** Must be elevated
- **Material:** Must be opaque



HOW TO GET A RAIN BARREL REBATE

Review rebate materials at doee.dc.gov/rainbarrelrebates

- 1** **ASSESS** your site to determine the best location, size, and type of barrel. Take Before photos of the location
- 2** **PURCHASE** a barrel that meets all rebate requirements
- 3** **INSTALL** the barrel and take After photos that show all required features
- 4** **SUBMIT** your rebate application and documents to the Alliance for the Chesapeake Bay. Rebate checks are sent within 2-6 weeks once the application is approved

INSTALLING YOUR OWN RAIN BARREL

GENERAL SUPPLIES NEEDED

- Drill
- An electric saw to cut downspout
- Extra downspout materials (connectors, elbows, extensions, etc.)
- Specific materials and tools needed vary by barrel type

THINGS TO CONSIDER

- Is the barrel up or down hill from the garden?
- Is the ground level?
- How accessible is the spigot in this location?
- Will a barrel in this location block access to any windows, walkways, meters, etc.?

INSTALLING THE RAINGRID RIVERSIDES RAIN BARREL



MATERIALS NEEDED

Diverter Box

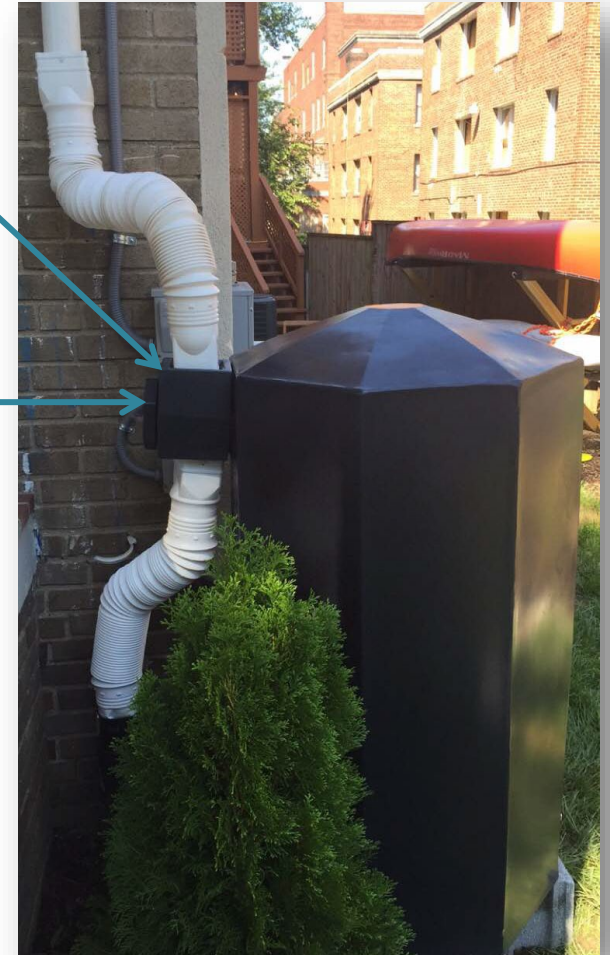
Gasket

Filter Cylinder

Bolts (4)

Spigot

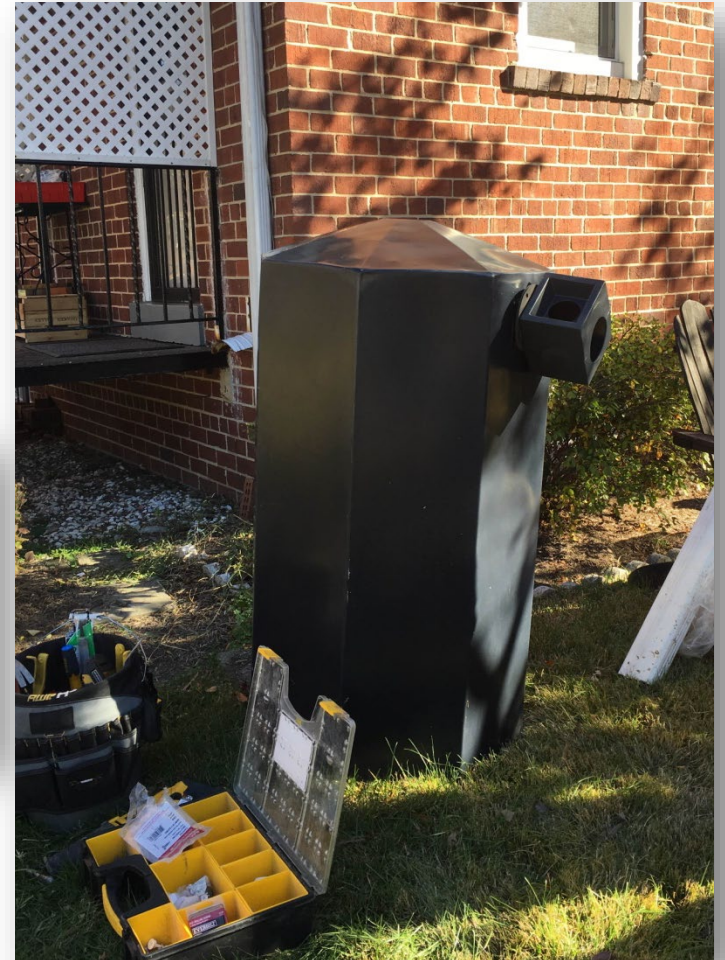
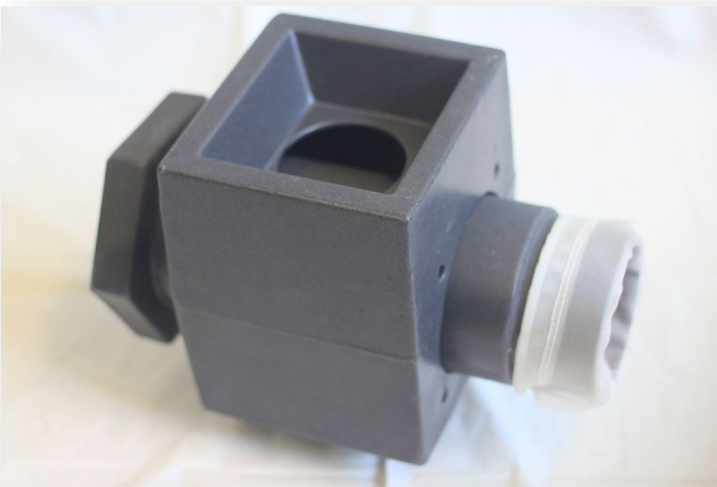
Plug



INSTALLING THE RAINGRID RIVERSIDES RAIN BARREL

ASSEMBLE DIVERTER BOX

Screws and Gaskets



INSTALLING THE RAINGRID RIVERSIDES RAIN BARREL

ALIGN BARREL ON LEVEL CINDERS WITH DOWNSPOUT



INSTALLING THE RAINGRID RIVERSIDES RAIN BARREL

CUT DOWNSPOUT AND CONNECT DIVERTER BOX



INSTALLING THE RAINGRID RIVERSIDES RAIN BARREL

ATTACH OVERFLOW TO DIVERTER BOX



INSTALLING THE STORMWORKS HYDRA RAIN BARREL

MATERIALS NEEDED

Y-Diverter

Elbow

Overflow

2 Side Plugs

Filter Basket

Spigot



INSTALLING THE STORMWORKS HYDRA RAIN BARREL

ATTACH ELBOW, SPIGOT, AND FILTER



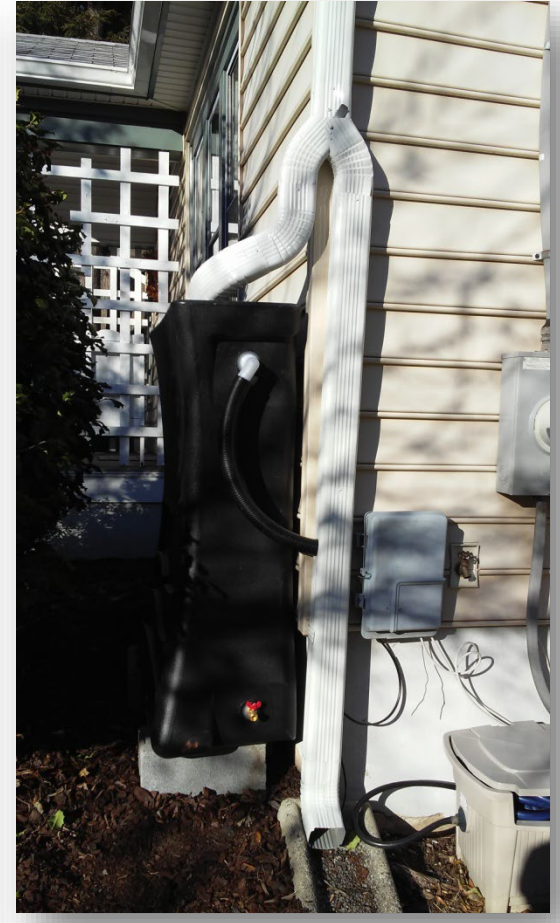
INSTALLING THE STORMWORKS HYDRA RAIN BARREL

ALIGN BARREL ON LEVEL CINDERS AND MEASURE/CUT THE DOWNSPOUT. THEN ATTACH THE Y-DIVERTER



INSTALLING THE STORMWORKS HYDRA RAIN BARREL

LEAD INLET TO BARREL AND ATTACH OVERFLOW TO PLASTIC ELBOW



GENERAL RAIN BARREL MAINTENANCE TIPS

- Clean the inlet screen/filter to your barrel every 6-8 weeks
- Try to empty the barrel completely between each rain storm
- In the winter, disconnect the barrel/put the barrel on bypass to avoid cracking
- Level the ground your barrel sits on annually



GENERAL RAIN BARREL MAINTENANCE TIPS

WINTERIZE YOUR RAIN BARREL

- In the winter, disconnect the barrel/put the barrel on bypass to avoid cracking



HOW TO CONTACT US

Maya Sterett

msterett@allianceforthebay.org

Phone: 202-270-8235

Queen Richardson

queen.richardson@dc.gov

Phone: 202-498-8284

