

STORMWATER INSPECTIONS AT DISTRICT AUTOSHOPS

Why & What to expect





OVERVIEW



When rain falls in the District...



Water runs off from hard surfaces, such as roofs, roads, and sidewalks, and becomes stormwater runoff.



Runoff runs into storm drains,
picking up pollution along the way.



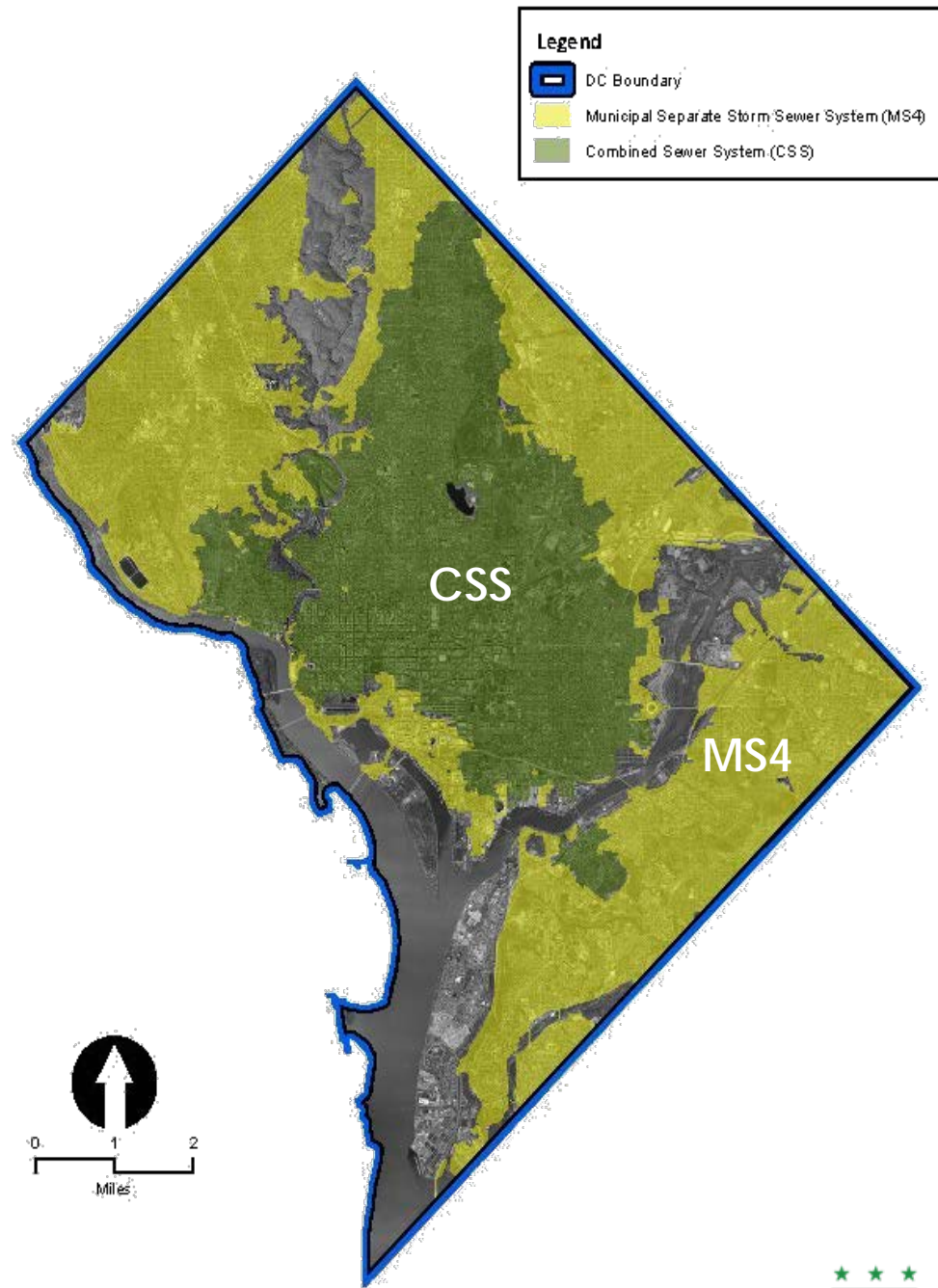
Storm drains can also look like this.



2/3

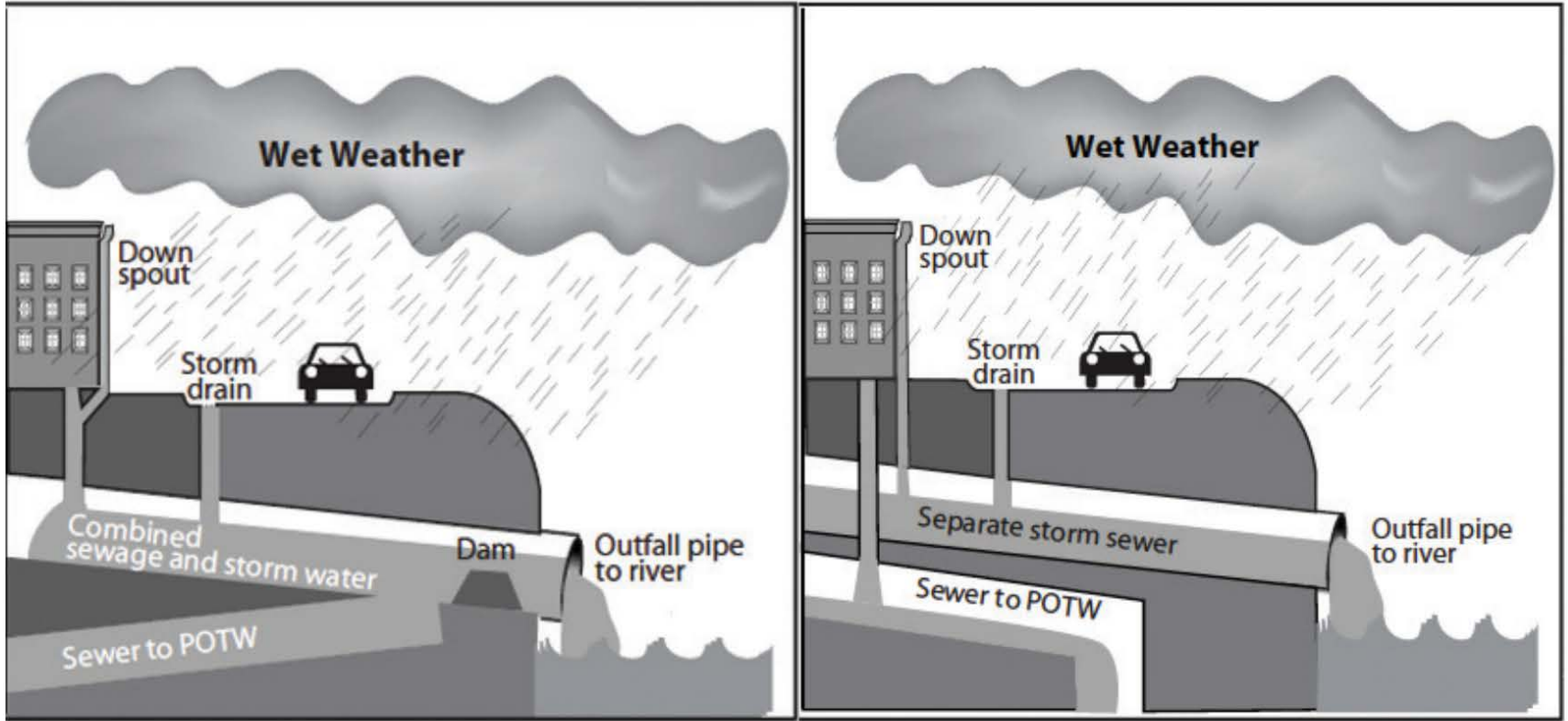
of the District
drains into local rivers
and streams with little
to no treatment.

- Municipal Separate Storm Sewer System (MS4)
- Combined Sewer System (CSS)



CSS

MS4



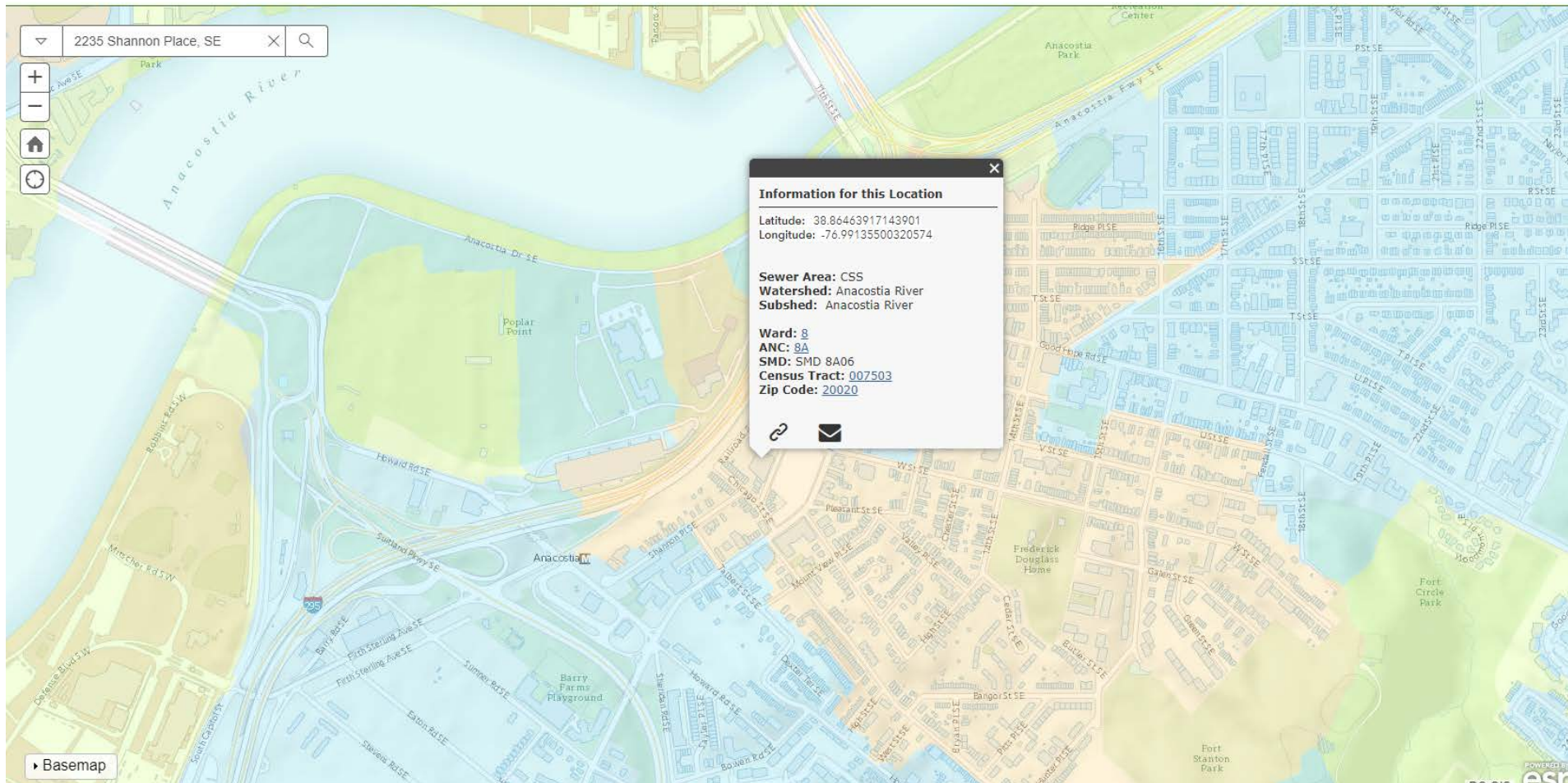
This is an *outfall*, where stormwater from the District's streets empties into a local stream.



How do you find out what sewer system you are in?

<https://dcgis.maps.arcgis.com/apps/InformationLookup/index.html?appid=a60a0086b47c4e35a638b7a8abe5954f>

DEPARTMENT OF ENERGY & ENVIRONMENT Identify Your Watershed and Sewer System



How do you find out what sewer system you are in?



STORMWATER POLLUTION

Anything other than stormwater

- Dirt
- Trash
- Wash water and soaps
- Vehicle and equipment fluids

- Pesticides and fertilizers
- Paints and solvents
- Salt and Brine
- Rust
- Pet waste



IMPACTS

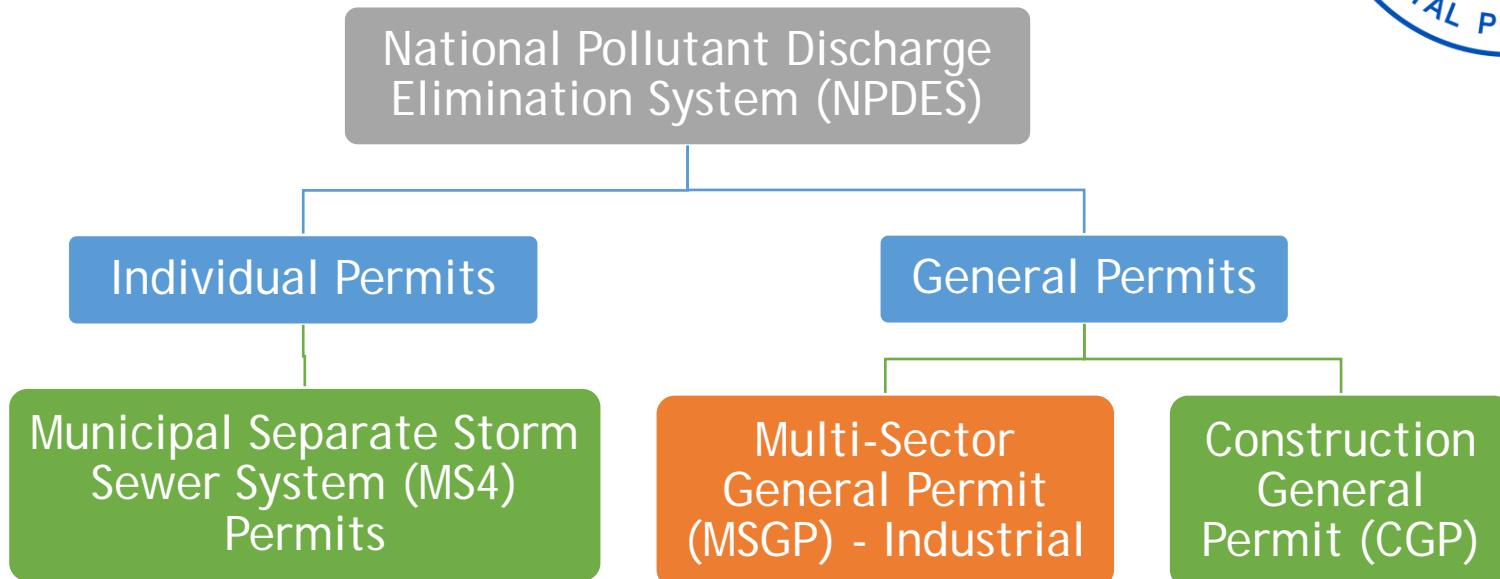


CLEAN WATER ACT

1972

The **Clean Water Act** is a federal law that regulates the discharge of pollutants into the nation's surface waters, including lakes, rivers, streams, wetlands, and coastal areas.

- Protects waterways from pollution
- Regulates illicit discharges
- Sets water quality standards



DISTRICT MS4 PERMIT

This Permit outlines District's plan to reduce impacts on local streams and rivers

Includes:

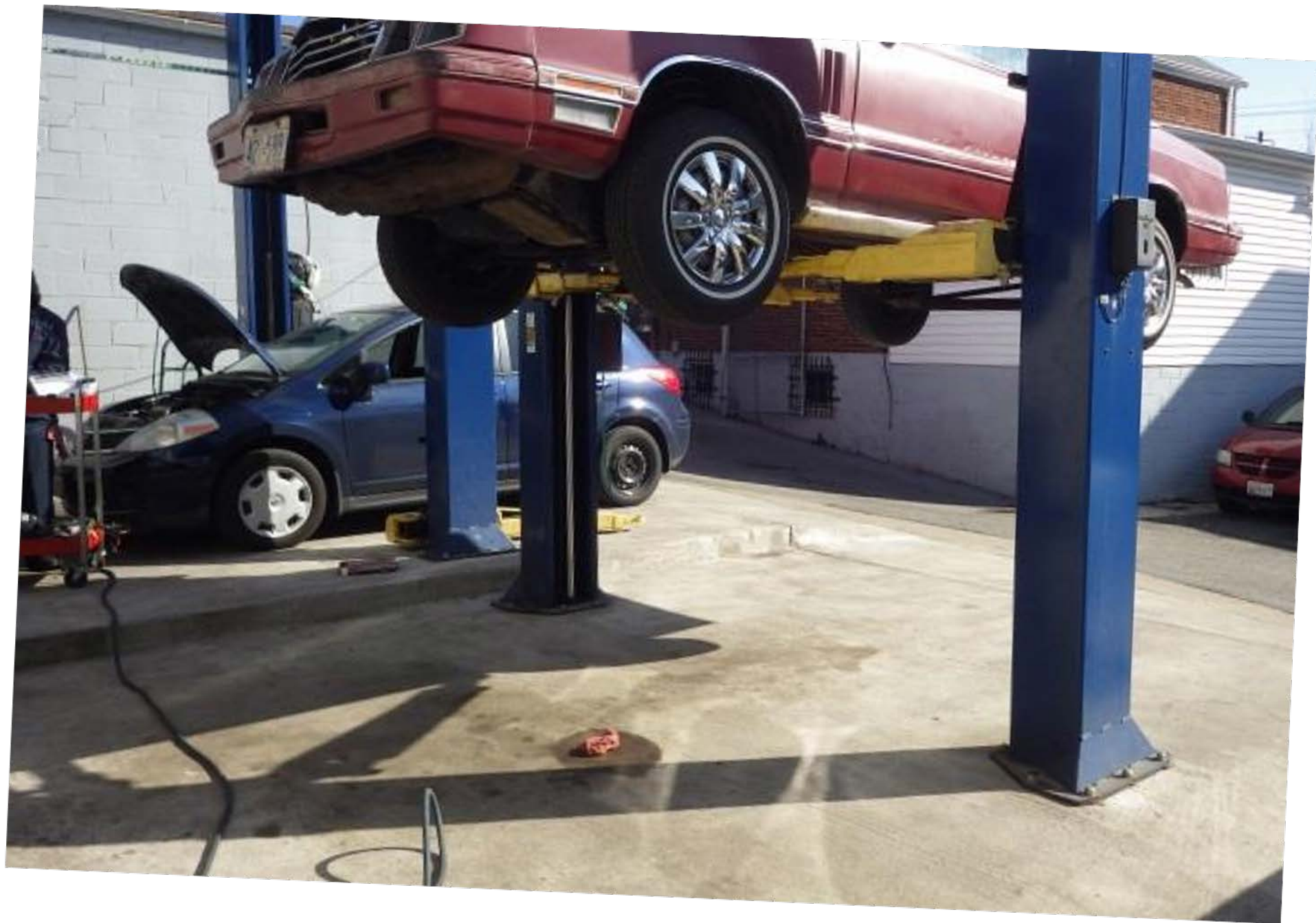
- Inspecting businesses that have been deemed "Critical Sources of Pollution"
 - Auto shops are on that list



NPDES VIOLATIONS

EPA Penalties for NPDES Violations

Types of Penalties	Fines	Imprisonment
Negligent Violation	\$2,500 - \$25,000	Up to 1 year
Knowing Violation	\$5,000 - \$50,000	Up to 3 years
Knowing Endangerment	< \$250,000	Up to 15 years
False Statement	< \$10,000	Up to 2 years
Other	Civil & Administration Penalties	



Department of Consumer and Regulatory Affairs

Business License Division
1100 4th Street S.W.
Washington DC 20024

Date Issued: 4/12/2016
Category: 4105
License#: 4105150004
License Period: 3/1/2016 - 2/28/2017

COLUMBIA
ser, Mayor

BASIC BUSINESS LICENSE

Name and Address:
MAN BALL

Premise/Application's Name and Address:
JNE CONTRACTING, INC.

Registered Agent's Name and Address:
Bill Havre

1150 CONNECTICUT AVE. NW SUITE 900
WASHINGTON DC20036

PART 1:
RECORDS
REVIEW

Ward:	ANC:	PERM NO.

n Contr-Construction Mngr

-- THE LAW REQUIRES THIS LICENSE TO BE POSTED IN A CONSPICUOUS PLACE ON THE PREMISES --

Melinda Br...

Director:

Melinda Br...



of Issued or Start of License-Period Date

Part 1: RECORDKEEPING

1. Paperwork

- Business License
- Occupancy License
- Manager/Owner information
- Last time inspected?

2. Receipts

- Used Oil/ Antifreeze disposal
- Metal Recycling
- Tire Recycling
- Other Waste Disposal
- Oil Water Separator or other Structural system maintenance



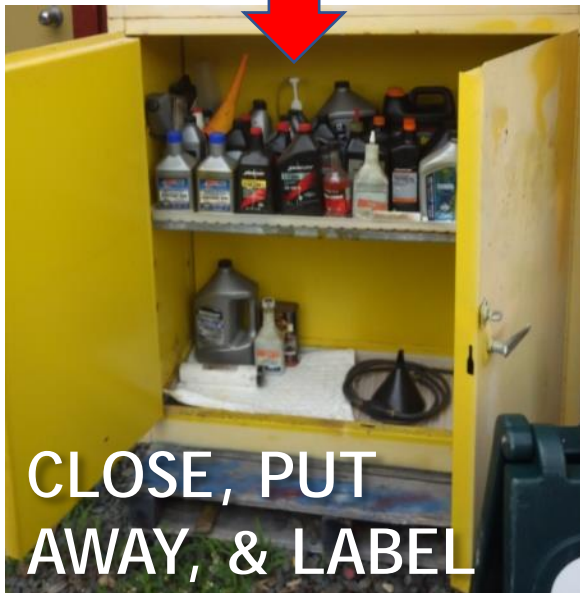


**PART 2:
WALKTHROUGH
SITE TO LOOK AT
HOUSEKEEPING
& MATERIALS
MANAGEMENT**

08/16



GOOD HOUSEKEEPING



ARE WASTES DRY?

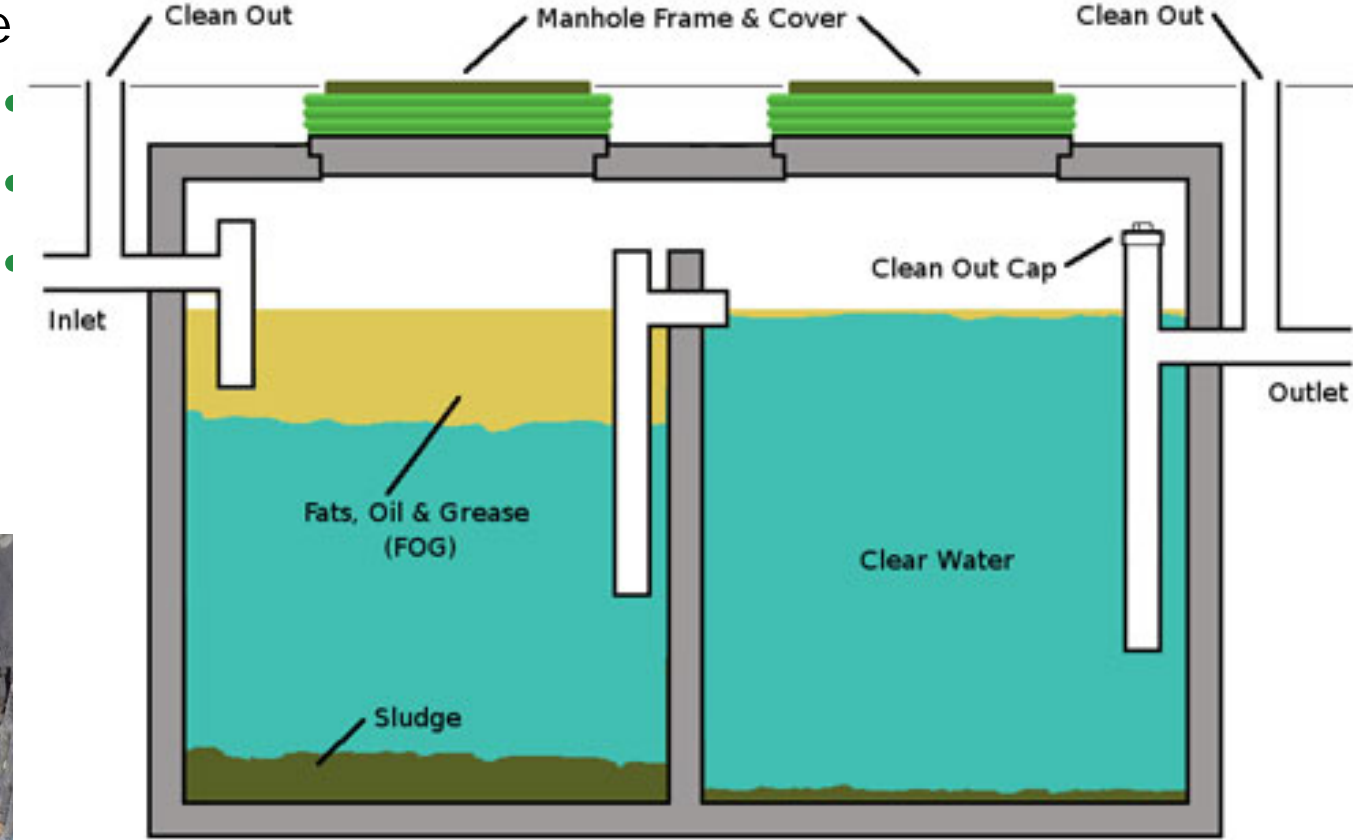
- Are liquids disposed in the trash, recycling, or directly into the storm drain?
- Are lids on dumpsters & trash bins?
- Does the dumpster have its plug in place?



STRUCTURAL BEST MANAGEMENT PRACTICES (BMPs)

BMP:
mee

ie to help



OTHER COMMON BMPs



Filtration Devices



Permeable
Pavement



Drains & Curbs



Bioretention & Trees



Green Roofs



Swales

ARE SPILLS, LEAKS, & DRIPS PREVENTED/ CLEANED UP?

1. Are spills seen on site?
2. Are there spill kits/materials available for clean up?
3. Are there vehicles parked over a storm drain?

Evidence of Leaks



Actively leaking vehicle over storm drain
= Illicit Discharge



ARE MATERIALS ELEVATED AND COVERED?

Common issues seen:



IS THERE AN ILLICIT DISCHARGE?

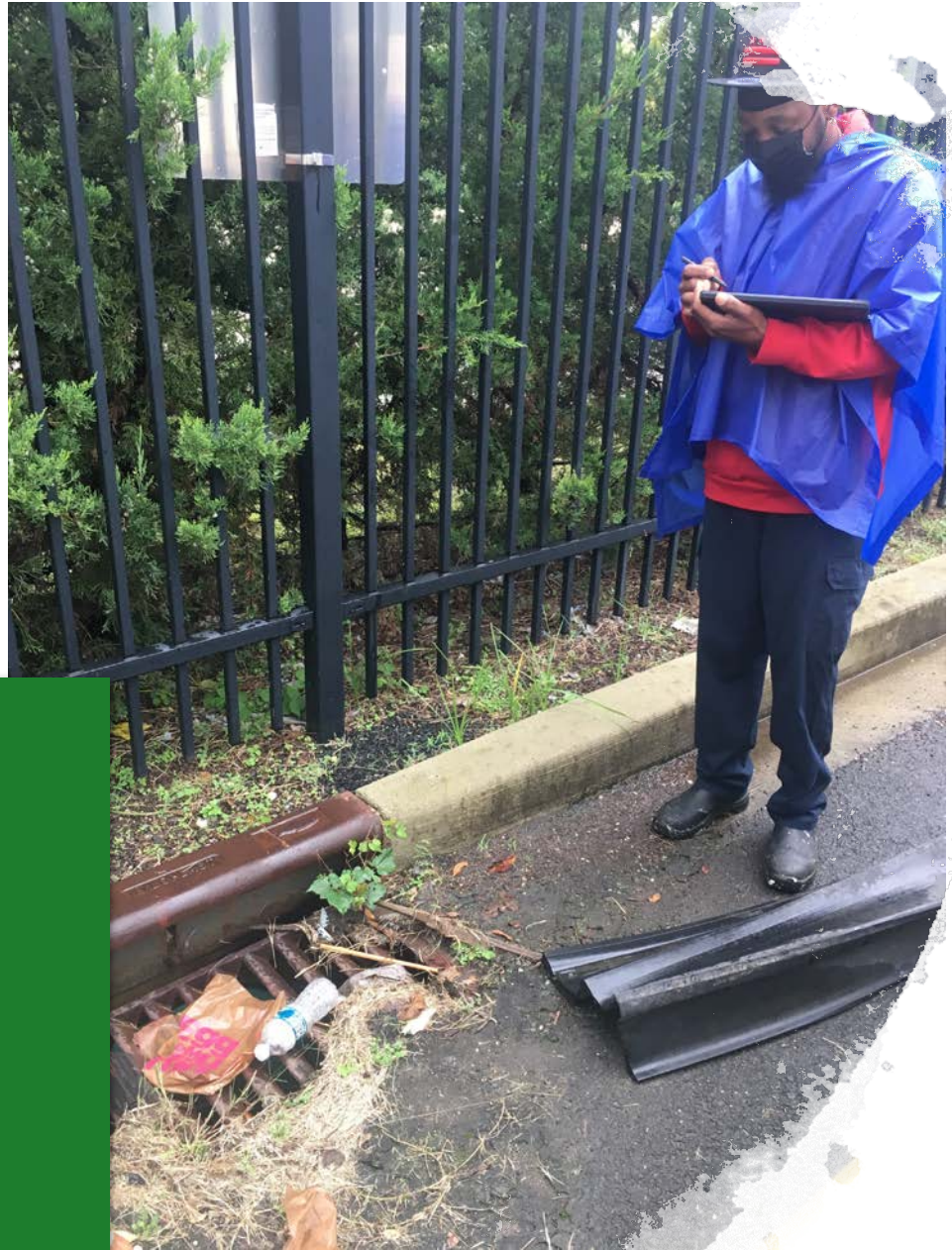
Illegal releases of material other than stormwater into a storm sewer system or directly into a waterway

Types:

- Misconnected or leaking sewer lines
- Materials poured or swept into stormdrains
- Dumpster juice
- Soapy/Wash water



PART 3: FOLLOW-UP



FOLLOW UP

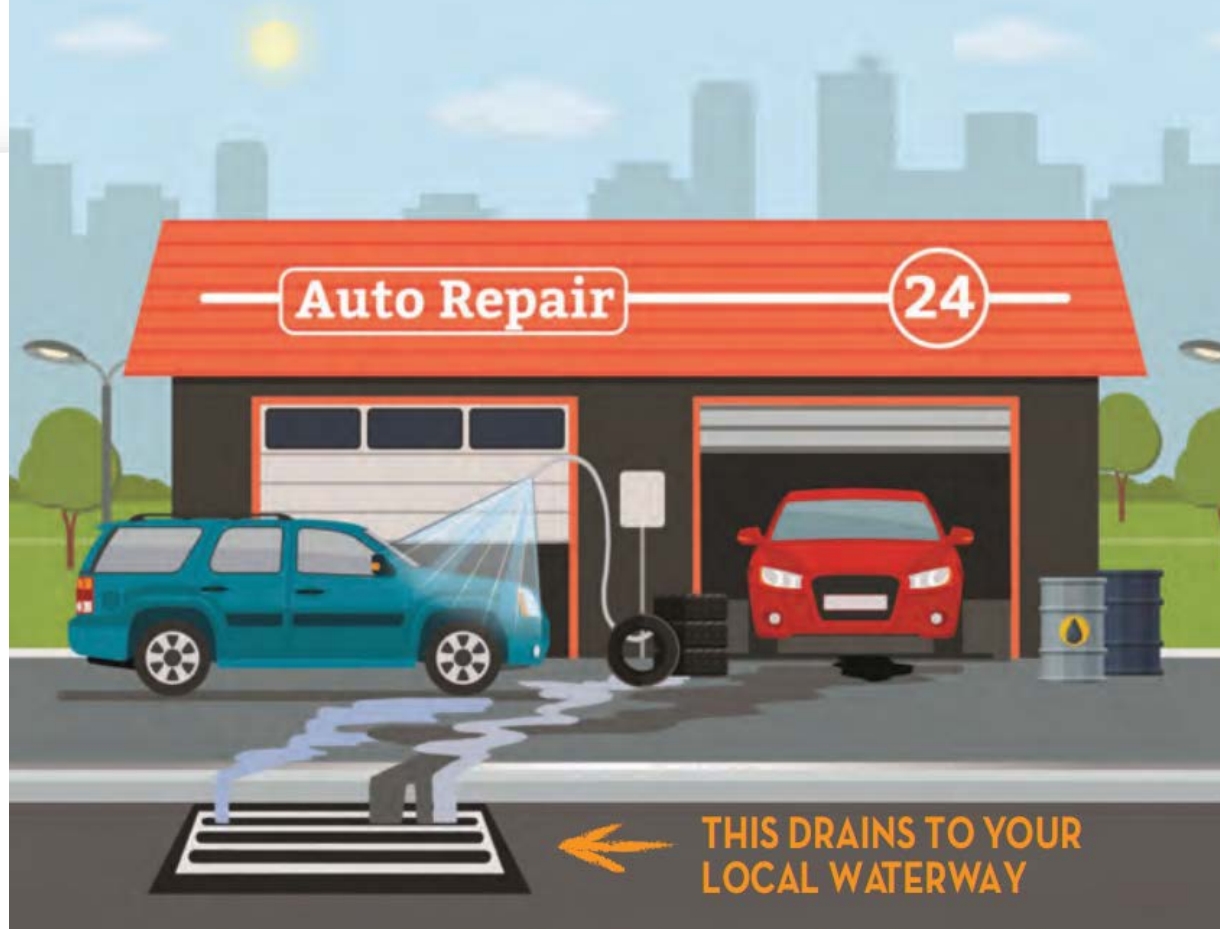
- **Option 1:** Site in good condition, no issues need to be addressed. See you next inspection!
- **Option 2:** Some issues were found, given things to correct, follow up inspection
- **Option 3:** Issues found, not addressed, discharge to storm sewer/waterways- Notice of Violation/Fines



How you can help

1. Spill pose a threat to human health or the environment?
 - CALL 911/ Call DC Fire Immediately: 202-673-3331 or 911
2. Pollution or questionable discharges originating off-site are observed running into storm drains:
 - DOEE: Inspection and Enforcement Division: David Pilat, o. 202-281-3963, c. 202-805-1355, david.pilat@dc.gov, or Ibrahim Famuditimi: o. 202-535-2643, c. 202-439-5698, ibrahim.famuditimi@dc.gov
 - DC Water (CSS Areas) – 202-612-3400
3. Leaking sewer line or water main:
 - DC Water – 202-612-3400
4. Illegal dumping of solid waste:
 - Call 311, visit 311.dc.gov, or use the DC 311 smartphone app.





THIS DRAINS TO YOUR LOCAL WATERWAY

**KEEP IT CLEAN FOR
DOWNSTREAM**

REVIEW



#1

1. Are Sources of Pollution stored inside or under cover?

No

Yes



#2

2. Any visible spills or leaks?

Yes



#3

3. Are spill kits available, labeled, stocked, and easily accessible? **Yes**



#4

4. Are waste containers kept covered/closed and in good condition?

Yes



No



#5

5. Are stormdrains blocked?

No

Yes



#6

6. Are stormwater filtration devices being maintained?

No



Yes



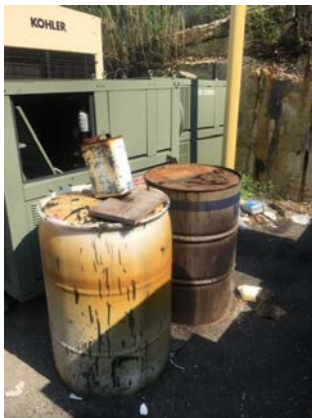
#7

7. Is the facility being maintained?

No



Yes



REVIEW

- When rain falls in the District, it runs off hard surfaces and becomes stormwater runoff
- In 2/3 of the District, runoff goes into our streams with hardly any treatment
- There are two sewer systems in the District of Columbia: the MS4 and the CSS
- The Clean Water Act requires autosshops in the MS4 to take action to prevent stormwater pollution and are inspected on regular basis.





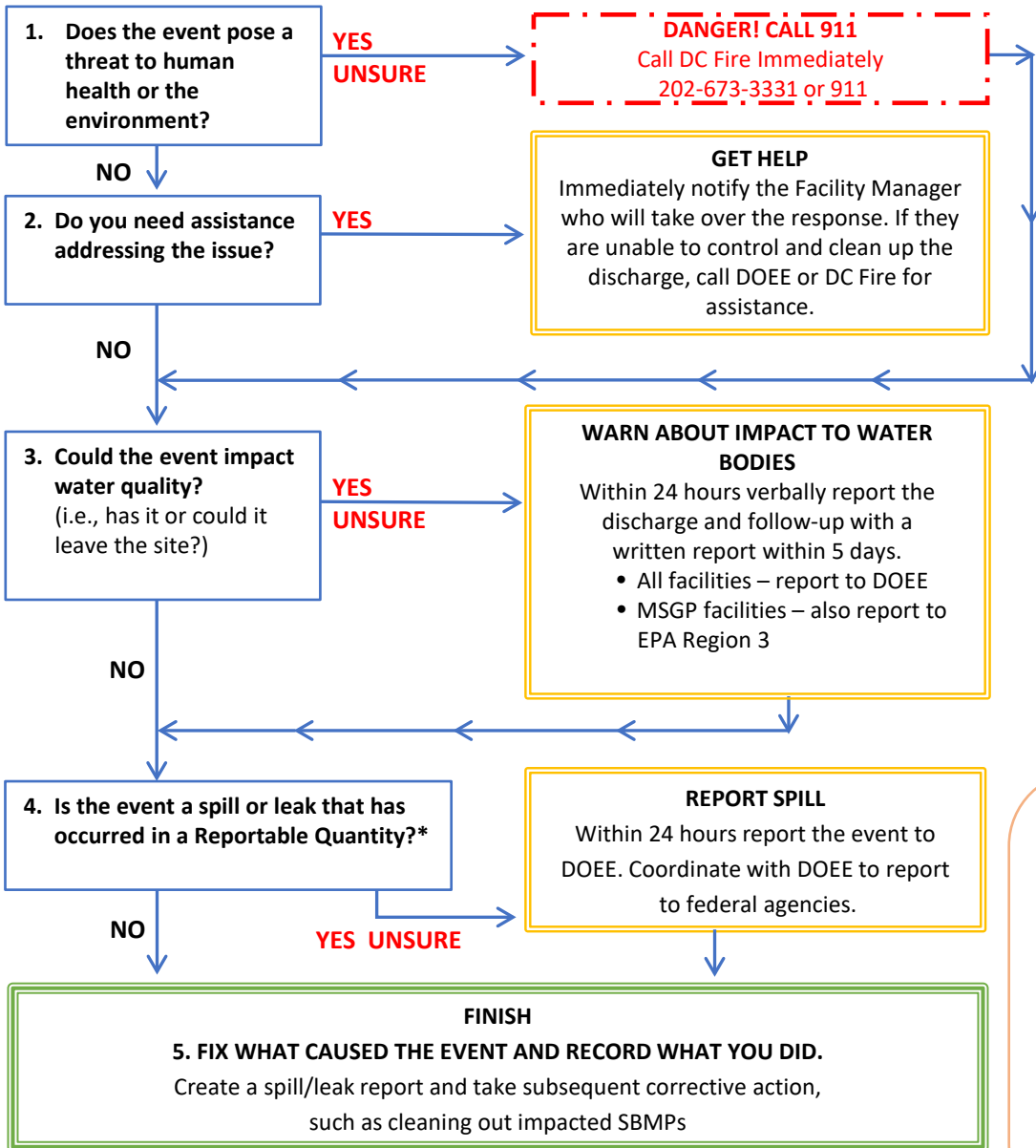
Thank You!

Illicit Discharge and NPDES Branch
Inspection and Enforcement Division

Mary Polacek
mary.polacek@dc.gov
202-535-2600
doee.dc.gov



IN THE CASE OF A SPILL OR LEAK BEGIN AT BOX 1



SMALL SPILL/LEAK CLEAN UP PROCEDURE

Step 1: Contain the spill or leak using a berm found in the spill kit or using plastic sheeting to cover any storm drains to which the spill or leak is traveling.

Step 2: Identify the leak/spill source and take necessary measures to stop it. If a leaky vehicle or equipment cannot be repaired promptly, place a drip pan, absorbent pads, or loose absorbent under the leak until it can be serviced.

Step 3: Clean up the spill or leak using contents of the spill kits. Use absorbent pads to wipe up spills and sprinkle loose absorbents over the spill/leak. Work the loose absorbent into the liquid using a non-sparking shovel or broom.

Notify SWPPP Team Lead if supplies in the spill response kit are running low.

Step 4: To dispose of used absorbents, sweep them up within 24 hours or before the next rain event using a non-spark shovel, broom, and/or dustpan. Dispose all absorbent materials (loose or pads) in a hazardous waste disposal bin, as they may be flammable.

Step 5: Record the spill or leak in the P2 Database yourself using the "Spill and Leak Report" or by notifying the Facility Manager or SWPPP representative.

HOW TO REPORT DISCHARGES:

- Pollution or questionable discharges originating off-site are observed running into storm drains
 - DOEE: Inspection and Enforcement Division: David Pilat, o. 202-281-3963, c. 202-805-1355, david.pilat@dc.gov, or Ibrahim Famuditimi: o. 202-535-2643, c. 202-439-5698, ibrahim.famuditimi@dc.gov
 - DC Water (CSS Areas) – 202-612-3400
 - MSGP – EPA Region 3: Peter Gold, o. 215-814-5236, gold.peter@epa.gov
- Leaking sewer line or water main:
 - DC Water – 202-612-3400
- Illegal dumping of solid waste:
 - Call 311, visit 311.dc.gov, or use the DC 311 smartphone app.

*A leak, spill, or other release containing a hazardous substance or oil in an amount equal to or in excess of a reportable quantity established under either 40 CFR Part 110 (oil), 40 CFR Part 117 (hazmat), or 40 CFR Part 302 (hazmat).